



Free Crochet Pattern
Lion Brand[®] Homespun[®]
Eccentric Blocks Afghan
Pattern Number: L30062



Free Crochet Pattern from Lion Brand Yarn

Lion Brand[®] Homespun[®]

Eccentric Blocks Afghan

Pattern Number: L30062

SKILL LEVEL: Easy (Level 2)

SIZE: One Size

About 39 x 52 in. (99 x 132 cm)

CORRECTIONS: None as of Dec 22, 2013. To check for later updates, click [here](#).

MATERIALS

- 790-368 Lion Brand Homespun Yarn: Montana Sky
1 Ball (A)
- 790-412 Lion Brand Homespun Yarn: Pearls
1 Ball (B)
- 790-418 Lion Brand Homespun Yarn: Ambrosia
1 Ball (C)
- 790-404 Lion Brand Homespun Yarn: Lagoon
1 Ball (D)
- 790-312 Lion Brand Homespun Yarn: Edwardian
1 Ball (E)
- 790-408 Lion Brand Homespun Yarn: Wild Fire
1 Ball (F)
- 790-375 Lion Brand Homespun Yarn: Candy Apple
1 Ball (G)
- 790-426 Lion Brand Homespun Yarn: Tulips
1 Ball (H)
- Lion Brand Crochet Hook - Size K-10.5 (6.5 mm)
- Lion Brand Large-Eye Blunt Needles (Set of 6)

**Homespun[®] (Article #790). 98% Acrylic, 2% Polyester; package size: 6.00oz/170.00 gr. (185yds/169m) pull skeins*



GAUGE:

10 hdc + 7 1/2 rows = 4 in. (10 cm).
1 Solid Square = about 13 x 13 in. (33 x 33 cm).

BE SURE TO CHECK YOUR GAUGE. When you match the gauge in a pattern, your project will be the size specified in the pattern and the materials specified in the pattern will be sufficient. If it takes you fewer stitches and rows to make a 4 in. [10 cm] square, try using a smaller size hook or needles; if more stitches and rows, try a larger size hook or needles.

NOTES:

1. Afghan is made from 18 Squares: 2 Triangle Squares, 2 Diagonal Squares, 6 Solid Squares, and 8 Small Squares. Squares are sewn together following Assembly Diagram.
2. Triangle Squares and Diagonal Squares are worked in intarsia crochet following Charts.
3. When working from charts, read charts from right to left on RS rows and from left to right on WS rows. Each box represents one hdc.
4. To change color, work last st of old color to last yarn over. Yarn over with new color and draw through all loops to complete the st. Drop strand of color not in use to WS of work.

AFGHAN

SOLID SQUARES (make 6 - 1 each with A, B, C, D, E, and H)

Ch 34.

Row 1 (RS): Hdc in 3rd ch from hook (beg ch does not count as a st) and in each ch across - 32 hdc.

Rows 2-24: Ch 2 (does not count as a st), turn, hdc in each st across.

Fasten off.

TRIANGLE SQUARES (make 2)

Note: Triangle Squares and Diagonal Squares are worked in intarsia crochet following charts. Drop color not in use to WS of Square.

With first color, ch 34.

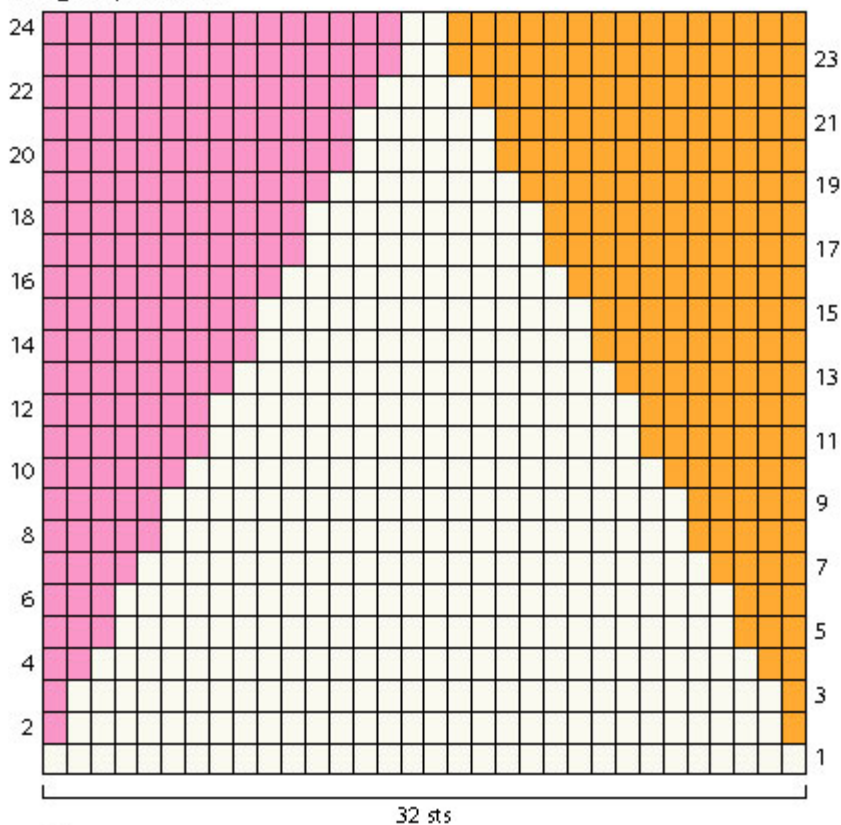
Triangle Square Chart Row 1 (RS): Hdc in 3rd ch from hook (beg ch does not count as a st) and in each ch across - 32 hdc.

Change to 2nd color.

Triangle Square Chart Row 2: With 2nd color, ch 2 (does not count as a st), turn, hdc in first st; change to first color, hdc in next 30 sts; change to 3rd color, hdc in last st.

Continue to follow Triangle Square Chart until all 24 rows of Chart have been completed. Fasten off.

Triangle Square Chart



- = First color from Assembly Diagram
- = 2nd color from Assembly Diagram
- = 3rd color from Assembly Diagram

DIAGONAL SQUARES (make 2)

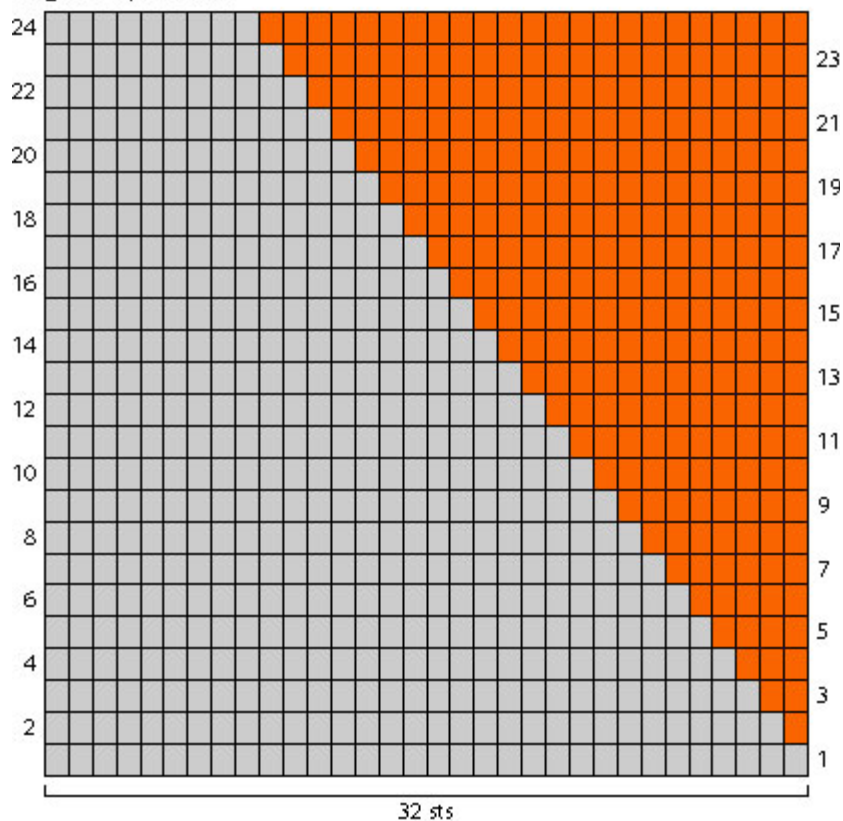
With first color, ch 34.

Diagonal Square Chart Row 1 (RS): Hdc in 3rd ch from hook (beg ch does not count as a st) and in each ch across - 32 hdc.

Diagonal Square Chart Row 2: Continue with first color, ch 2 (does not count as a st), turn, hdc in first 31 sts; change to 2nd color, hdc in last st.

Continue to follow Diagonal Square Chart until all 24 rows of Chart have been completed. Fasten off.

Diagonal Square Chart



- = First color from Assembly Diagram
- = 2nd color from Assembly Diagram

SMALL SQUARES (make 8 - 1 each with A, B, C, D, E, F, G, and H)

Ch 18.

Row 1 (RS): Hdc in 3rd ch from hook (beg ch does not count as a st) and in each ch across - 16 hdc.

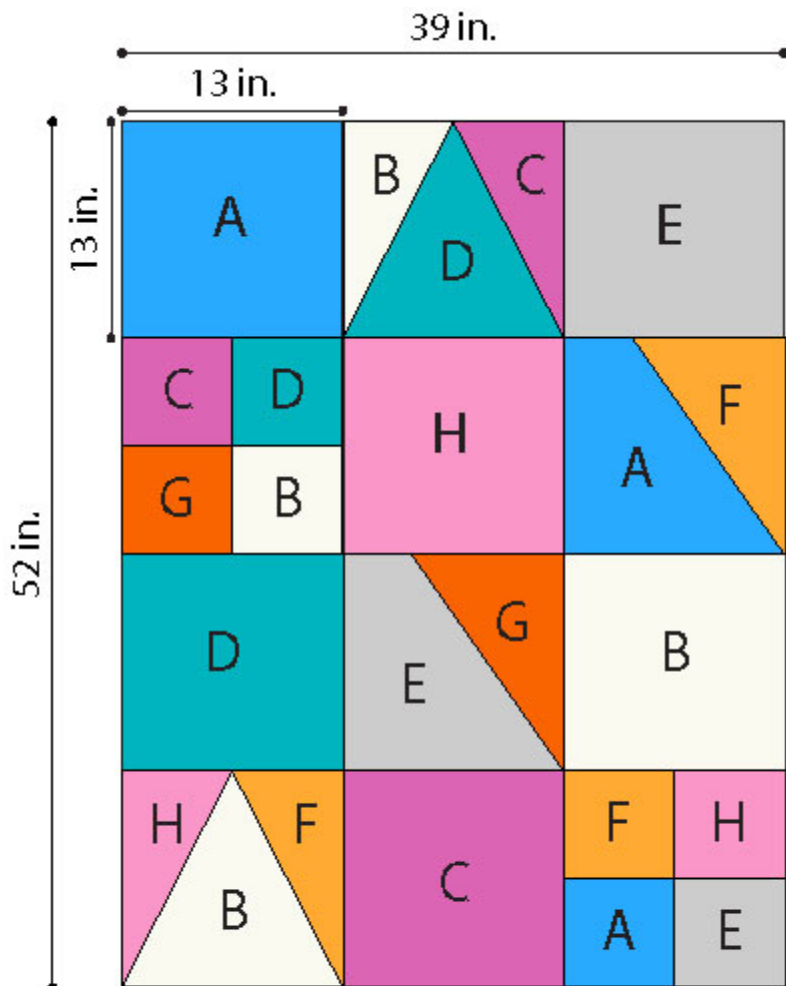
Rows 2-12: Ch 2 (does not count as an hdc), turn, hdc in each st across.

Fasten off.

FINISHING

Following Assembly Diagram, sew Small Squares together to make large squares, then sew Squares together into three strips of four Squares each. Sew strips together to make Afghan.

Weave in ends.



- | | |
|----------------------|----------------------|
| #368 Montana Sky (A) | #312 Edwardian (E) |
| #412 Pearls (B) | #408 Wild Fire (F) |
| #418 Ambrosia (C) | #375 Candy Apple (G) |
| #404 Lagoon (D) | #426 Tulips (H) |

ABBREVIATIONS / REFERENCES

Click for explanation and illustration

beg = begin(s)(ning)

ch(s) = chain(s)

hdc = half double crochet

RS = right side

st(s) = stitch(es)

WS = wrong side

Learn to crochet instructions: <http://learnToCrochet.LionBrand.com>

Every effort has been made to have the knitting and crochet instructions accurate and complete. We cannot be responsible for variance of individual knitters and crocheters, human errors, or typographical mistakes.

We want your project to be a success! If you need help with this or any other Lion Brand pattern, e-mail support is available 7 days per week. Just click [here](#) to explain your problem and someone will help you!

For thousands of free patterns, visit our website www.LionBrand.com

To order visit our website www.lionbrand.com or call: (800) 258-YARN (9276) any time!

When in New York City, visit the Lion Brand Yarn Studio where we have the largest selection of our yarns anywhere and over 100 classes and events monthly.

34 West 15th Street, NY, NY 10011

Copyright ©1998-2013 Lion Brand Yarn Company, all rights reserved. No pattern or other material may be reproduced -- mechanically, electronically, or by any other means, including photocopying -- without written permission of Lion Brand Yarn Company.