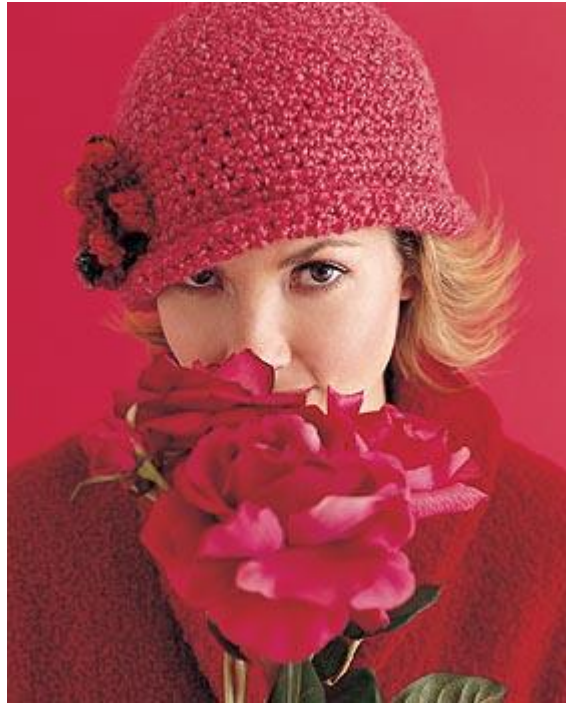




LION BRAND® HOMESPUN®
Crochet Cloche



Skill Level: Easy

SIZE

One size fits most.

FINISHED MEASUREMENTS

Circumference approx 21"/53cm

MATERIALS

- One 6oz/170g skein (approximately 185yd/169m) of Lion Brand Homespun (acrylic/polyester) in #367 Covered Bridge Red (for cloche)
- One 2.5oz/70g ball (approximately 57yd/52m) of Lion Brand Lion Bouclé (acrylic/mohair/nylon) in #212 Popsicle (for rosette)
- One each size N-13 and P-15 (9 and 10mm) Lion Brand crochet hook OR SIZE TO OBTAIN GAUGE
- One Lion Brand large-eyed, blunt needle

GAUGE

10 sc= 4"/10cm using smaller hook and Homespun. TAKE TIME TO CHECK YOUR GAUGE

Note: This hat is worked spirally; do not join at the end of rnds.

INSTRUCTIONS

Cloche

Rnd 1 Using smaller hook and Homespun, ch 3. Join with slip st to first ch to form ring. Work 6 sc in ring. Place marker for beginning of rnd.

Rnd 2 Work 2 sc in each sc around—12 sc.

Rnd 3 *Sc in next sc, 2 sc in next sc; repeat from * around—18 sc.

Rnd 4 *Sc next 2 sc, 2 sc in next sc; repeat from * around—24 sc.

Rnd 5 *Sc in next 3 sc, 2 sc in next sc; repeat from * around—30 sc.

Rnd 6 *Sc in next 4 sc, 2 sc in next sc; repeat from * around—36 sc.

Rnd 7 *Sc in next 5 sc, 2 sc in next sc; repeat from * around—42 sc.

Rnd 8 *Sc in next 6 sc, 2 sc in next sc; repeat from * around—48 sc.

Rnd 9 *Sc in next 7 sc, 2 sc in next sc; repeat from * around—54 sc. Work even in sc for 3.5"/9cm from last inc.

Next Rnd Working in front loops only, sc in next 5 sc, 2 sc in next sc around—63 sc. Change to larger hook and work even in sc for 2.5"/6.5cm or desired length. Last Rnd Using larger hook, work slip st in back loop of each sc around. Fasten off.

Rosette

© 1998-2005 Lion Brand Yarn Company, all rights reserved
34 West 15th Street, New York, New York 10011
Call TOLL-FREE 1-800-258-YARN

Make one rosette in Lion Bouclé, using crochet bouclé flower pattern to follow. Fasten to side of cloche.

ABBREVIATIONS:	
ch = chain	sc = single crochet
hdc = half double crochet	tc = treble (triple) crochet

**Homespun (Article #790) is a uniquely-textured bulky weight yarn that works up quickly and easily. 98% acrylic, 2% polyester; packaged in 6 oz/170g (185 yd/167m) pull skeins.*

Every effort has been made to have the knitting and crochet instructions accurate and complete. We cannot be responsible for variance of individual knitters and crocheters, human errors, or typographical mistakes.

© 1998-2005 Lion Brand Yarn Company, all rights reserved
34 West 15th Street, New York, New York 10011
Call TOLL-FREE 1-800-258-YARN

No pattern or other material may be reproduced – mechanically, electronically or by any other means, including photocopying – without written permission of Lion Brand Yarn Company