



**Knitting Patterns for Sale**  
**Lion Brand® Vanna's Choice®**  
**Downloadable Pattern: Intarsia Brocade Afghan**  
Pattern Number: 70355AD



**Knitting Patterns for Sale from Lion Brand Yarn**  
**Lion Brand® Vanna's Choice®**  
**Downloadable Pattern: Intarsia Brocade Afghan**  
Pattern Number: 70355AD

**SKILL LEVEL:** Intermediate

**SIZE:** One Size  
40 x 51 in. (101.5 x 129.5 cm)

**CORRECTIONS:** None

**MATERIALS**

- 860-170 Lion Brand Vanna's Choice® Yarn: Pea Green  
5 Balls (A)
- 860-099 Lion Brand Vanna's Choice® Yarn: Linen  
3 Balls (B)
- Lion Brand Crochet Hook - Size J-10
- Large-Eye Blunt Needles (Set of 6)

**GAUGE:**

11 sts + 8 1/2 rows = 4 in. (10 cm) in hdc. BE SURE TO CHECK YOUR GAUGE. When you match the gauge in a pattern, your project will be the size specified in the pattern and the materials specified in the pattern will be sufficient. If it takes you less stitches and rows to make a 4 in. [10 cm] square, try using a smaller size hook or needles; if more stitches and rows, try a larger size hook or needles.

**NOTES:**

To change color, work last st of old color to last yarn over. Yarn over with new color and draw through all loops on hook to complete st. Use separate ball of yarn for each large block of color.

**AFGHAN**

With A, ch 108.

**Row 1 (RS):** Hdc in 3rd ch from hook and each ch across - 106 hdc.

**Row 2:** Ch 2, turn, hdc in first 34 sts; change to B, hdc in next 4 sts; change to A, hdc in next 46 sts; change to B, hdc in next 2 sts; change to A, hdc in next 5 sts; change to B, hdc in next 3 sts; change to A, hdc in next 12 sts.

**Rows 3-106:** Beginning with Row 3, continue to follow chart until all rows have been worked. Fasten off.

**FINISHING**

**Edging**

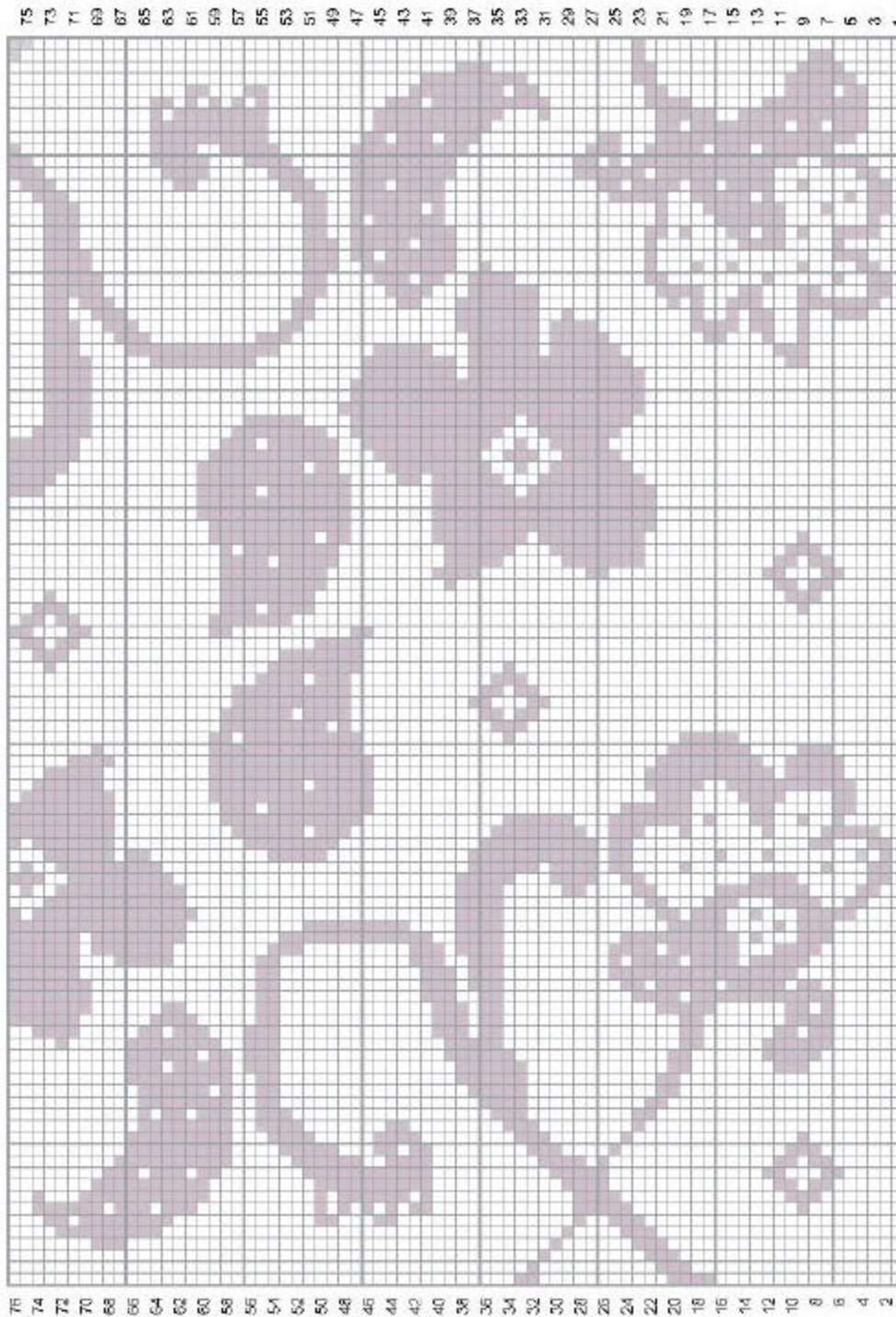
From RS, join B with sc anywhere along edge of Afghan.

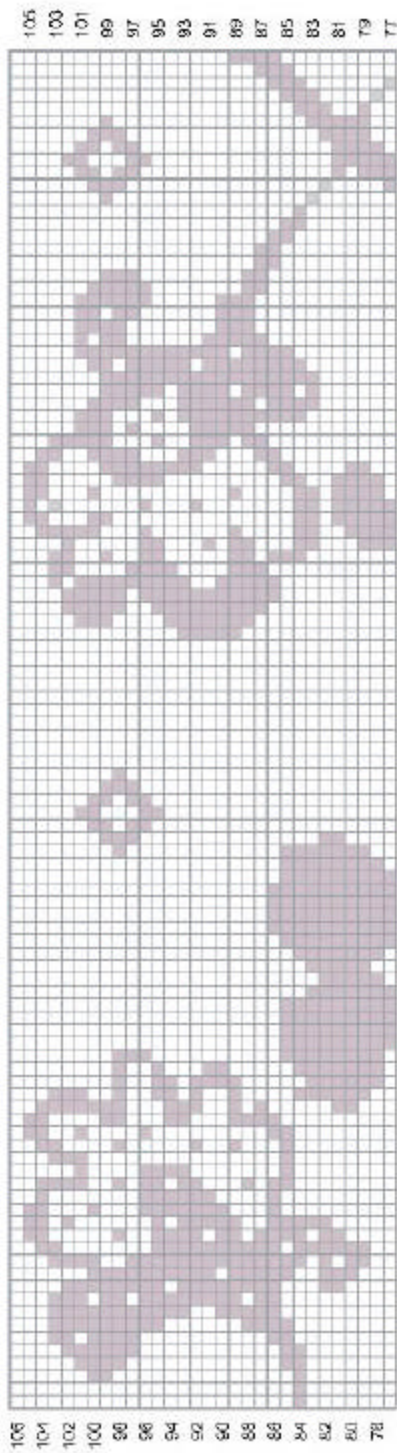
**Rnd 1 (RS):** Work sc evenly spaced around Afghan, working 3 sc in each corner; join with sl st in first sc.

**Rnd 2 (WS):** Ch 1, turn, sc in each sc around, working 3 sc in each corner; join with sl st in first sc.

**Rnd 3 (WS):** Ch 1, do not turn, sc in each sc around, working 3 sc in each corner; join with sl st in first sc. Fasten off.

Weave in ends.





**ABBREVIATIONS / REFERENCES**

Click for explanation and illustration

<u>ch(s) = chain(s)</u>	<u>hdc = half double crochet</u>
<u>rnd(s) = round(s)</u>	<u>RS = right side</u>
<u>sc = single crochet</u>	<u>sl st = slip stitch</u>
<u>WS = wrong side</u>	

Learn to knit instructions: <http://learnToKnit.LionBrand.com>

---

Every effort has been made to have the knitting and crochet instructions accurate and complete. We cannot be responsible for variance of individual knitters and crocheters, human errors, or typographical mistakes.

\**Vanna's Choice*® (Article #860) is a 4-ply worsted-weight 100% acrylic yarn. • Solids in 3.5 oz/100g (170 yd/156 m) balls • Prints in 3 oz/85 g (145 yd/133 m) balls 100% acrylic



We want your project to be a success! If you need help with this or any other Lion Brand pattern, e-mail support is available 7 days per week. Just click [here](#) to explain your problem and someone will help you!

**For hundreds of free patterns, visit our website [www.LionBrand.com](http://www.LionBrand.com)**

**To order visit our website [www.e-yarn.com](http://www.e-yarn.com) or call: (800) 258-YARN (9276) any time!**

Copyright ©1998-2005 Lion Brand Yarn Company, all rights reserved. No pattern or other material may be reproduced -- mechanically, electronically, or by any other means, including photocopying -- without written permission of Lion Brand Yarn Company. If you would like to send a copy of this page to someone, click [here](#) and we will be happy to do it for you.