



Crochet Patterns for Sale
Lion Brand Vanna's Glamour
Downloadable Pattern: Opera Sleeves

Pattern Number: 80773AD



Crochet Patterns for Sale from Lion Brand Yarn
Lion Brand® Vanna's Glamour
Downloadable Pattern: Opera Sleeves

Pattern Number: 80773AD

SKILL LEVEL: Experienced

SIZE: One Size

Finished Circumference at widest point (slightly stretched) 13 1/2 in. (34.5 cm)

Finished Length 17 in. (43 cm)

CORRECTIONS: None

MATERIALS

- 861-153 Lion Brand Vanna's Glamour® : Onyx
2 Balls
- Lion Brand Crochet Hook - Size E-4
- Lion Brand Stitch Markers
- Large-Eye Blunt Needles (Set of 6)

GAUGE:

1 Flower Motif = 2 3/4 in. (7 cm) diameter. BE SURE TO CHECK YOUR GAUGE. When you match the gauge in a pattern, your project will be the size specified in the pattern and the materials specified in the pattern will be sufficient. If it takes you less stitches and rows to make a 4 in. [10 cm] square, try using a smaller size hook or needles; if more stitches and rows, try a larger size hook or needles.

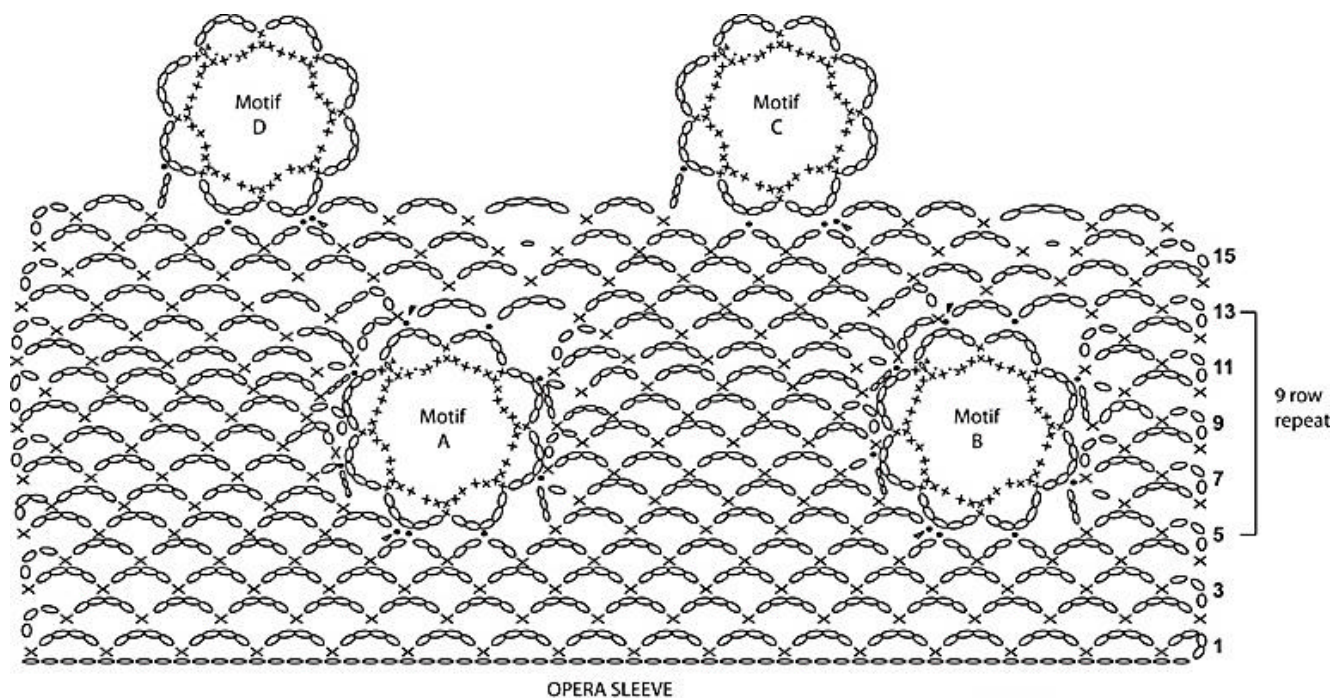
STITCH EXPLANATION:

Cl (cluster) Yarn over, insert hook into indicated st and draw up a loop, yarn over and draw through 2 loops, (yarn over, insert hook into same stitch, and draw up a loop, yarn over and draw through 2 loops) twice, yarn over and draw through all loops on hook.

hdc2tog (hdc dec) (Yarn over, insert hook in next stitch, yarn over and draw up a loop) twice, yarn over and draw through all 5 loops on hook.

NOTES:

1. Sleeves are worked flat, from widest end to narrowest end (cuff), and then seamed.
2. Flower Motifs are made first. The Sleeves are then worked in sections of chain mesh. Motifs are joined to the mesh as work progresses. Two motifs are joined in each section. Each section, except last section, is two ch-sps narrower than the previous section.
3. Flower Motifs will be referred to by letter (Motif A, Motif B, etc. up to Motif J), even though they are all identical, for ease in following pattern. Use markers to keep track of which Flower Motif is which.



OPERA SLEEVE

- chain (ch)
- slip stitch (sl st)
- × single crochet (sc)
- ⊕ cluster (Cl)
- ▽ join yarn location
- ▶ fasten off location

FLOWER MOTIF (make 10 for each sleeve, 20 total)

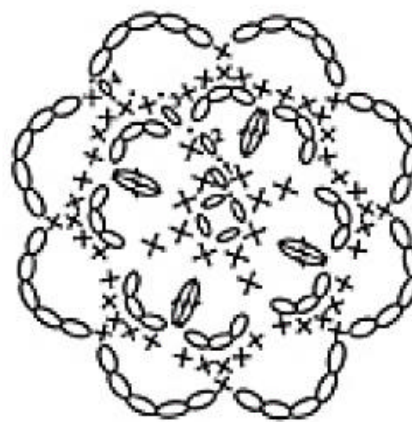
Ch 4; join with sl st in first ch to form ring.

Rnd 1: Ch 1, 8 sc in ring; join with sl st in first sc.

Rnd 2: Ch 1, sc in first sc, ch 3, Cl in next sc, ch 3, *sc in next sc, ch 3, Cl in next sc, ch 3; rep from * twice more; join with sl st in first sc - 4 clusters.

Rnd 3: Ch 1, 5 sc in each ch-sp around; join with sl st in first sc - 40 sc.

Rnd 4: Sl st in next sc, (sl st, ch 1, sc) in next sc (center sc of 5-sc group), ch 5, sk next 4 sc, *sc in next sc, ch 4, sk next 4 sc; rep from * around; join with sl st in first sc - 8 ch-5 sps. Fasten off and weave in ends.



FLOWER MOTIF

SLEEVE (make 2)

Ch 66.

Row 1 (RS): Sc in 6th ch from hook, *ch 4, sk next 3 ch, sc in next ch; rep from * across - 16 ch-sps.

Rows 2 and 3: Ch 3, turn, sc in next ch-sp, *ch 4, sc in next ch-sp; rep from * across.

Row 4 (beg join motifs): Ch 3, turn, sc in next ch-sp, (ch 4, sc in next ch-sp) 4 times, ch 2, sl st in any ch-5 sp of Motif A, (mark this sl st to re-join yarn later), ch 2, sc in next ch-sp of Sleeve, ch 2, sl st in next ch-5 sp of Motif A, ch 2, sc in next ch-sp of Sleeve, (ch 4, sc in next ch-sp) 5 times, ch 2, sl st in any ch-5 sp of Motif B (mark this sl st to re-join yarn later), ch 2, sc in next ch-sp of Sleeve, ch 2, sl st in next ch-5 sp of Motif B, ch 2, sc in next ch-sp of Sleeve, (ch 4, sc in next ch-sp) twice.

Section 1**First Side**

Row 5 (RS): Ch 3, sc in next ch-sp, ch 4, sc in next ch-sp, ch 3, sl st in next ch-5 sp of Motif B, turn.

Row 6: Ch 1, sk first ch-3 sp, sc in next ch-sp, ch 4, sc in next ch-sp, turn.

Row 7: Ch 3, sc in next ch-sp, ch 4, sc in sl st of Row 5, turn.

Row 8: Ch 3, sc in next ch-sp, ch 4, sc in next ch-sp, turn.

Row 9: Ch 3, sc in next ch-sp, ch 4, sc in next ch-sp, ch 3, sl st in next ch-5 sp of Motif B, turn.

Row 10: Ch 1, sk first ch-3 sp, sc in next ch-sp, ch 4, sc in next ch-sp, turn.

Row 11: Ch 3, sc in next ch-sp, ch 4, sc in sl st of Row 9, turn.

Row 12: Ch 3, sc in next ch-sp, ch 4, sc in next ch-sp, turn.

Row 13: Ch 3, sc in next ch-sp, ch 4, sc in next ch-sp, (ch 4, sl st in next ch-5 sp of Motif B) twice.

Fasten off.

Center

With RS facing, join yarn with sl st at marker of Motif B.

Row 5: (Ch 4, sc in next ch-sp) 5 times, ch 3, sl st in next ch-5 sp of Motif A, turn.

Row 6: Ch 1, sk first ch-3 sp, sc in next ch-sp, (ch 4, sc in next ch-sp) 4 times, ch 3, sl st in next ch-5 sp of Flower Motif B, turn.

Row 7: Ch 1, sk first ch-3 sp, sc in next ch-sp, (ch 4, sc in next ch-sp) 3 times, ch 4, sc in sl st of Row 5, turn.

Row 8: Ch 3, sc in next ch-sp, (ch 4, sc in next ch-sp) 3 times, ch 4, sc in sl st of Row 6, turn.

Row 9: Ch 3, sc in next ch-sp, (ch 4, sc in next ch-sp) 4 times, ch 3, sl st in next ch-5 sp of Motif A, turn.

Row 10: Ch 1, sk first ch-3 sp, sc in next ch-sp, (ch 4, sc in next ch-sp) 4 times, ch 3, sl st in next ch-5 sp of Motif B, turn.

Row 11: Ch 1, sk first ch-3 sp, sc in next ch-sp, (ch 4, sc in next ch-sp) 3 times, ch 4, sc in sl st of Row 9, turn.

Row 12: Ch 3, sc in next ch-sp, (ch 4, sc in next ch-sp) 3 times, ch 4, sc in sl st of Row 10, ch 3, sc in sl st where yarn was last fastened off, turn.

Row 13: Sk first ch-3 sp, (ch 4, sc in next ch-sp) 5 times, (ch 4, sl st in next ch-5 sp of Motif A) twice. Fasten off.

Second Side

With RS facing, join yarn with sl st at marker of Motif A.

Row 5: (Ch 4, sc in next ch-sp) 5 times, turn.

Row 6: Ch 3, sc in next ch-sp, (ch 4, sc in next ch-sp) 4 times, ch 3, sl st in next ch-5 sp of Motif A, turn.

Row 7: Ch 1, sk first ch-3 sp, sc in next ch-sp, (ch 4, sc in next ch-sp) 4 times, turn.

Row 8: Ch 3, sc in next ch-sp, (ch 4, sc in next ch-sp) 3 times, ch 4, sc in sl st of Row 6, turn.

Row 9: Ch 3, sc in next ch-sp, (ch 4, sc in next ch-sp) 4 times, turn.

Row 10: Ch 3, sc in next ch-sp, (ch 4, sc in next ch-sp) 4 times, ch 3, sl st in next ch-5 sp of Motif A, turn.

Row 11: Ch 1, sk first ch-3 sp, sc in next ch-sp, (ch 4, sc in next ch-sp) 4 times, turn.

Row 12: Ch 3, sc in next ch-sp, (ch 4, sc in next ch-sp) 3 times, ch 4, sc in sl st of Row 10, ch 3, sc in sl st where yarn was last fastened off, turn.

Row 13: Sk first ch-3 sp, (ch 4, sc in next ch-sp) 5 times, turn.

Continue Chain Mesh

Row 14: Working all the way across piece, ch 3, sc in next ch-sp, *ch 4, sc in next ch-sp; rep from * across - 16 ch-sps total.

Row 15 (beg join motifs): Ch 3, turn, sc in next ch-sp, ch 4, sc in next ch-sp, ch 1, sc in next ch-sp, (ch 4, sc in next ch-sp) twice, ch 2, sl st in any ch-5 sp of Motif C, (mark this sl st to re-join yarn later), ch 2, sc in next ch-sp of Sleeve, ch 2, sl st in next ch-5 sp of Motif C, ch 2, sc in next ch-sp of Sleeve, (ch 4, sc in next ch-sp) twice, ch 1, sc in next ch-sp, (ch 4, sc in next ch-sp) twice, ch 2, sl st in any ch-5 sp of Motif D, (mark this sl st to re-join yarn later), ch 2, sc in next ch-sp of Sleeve, ch 2, sl st in next ch-5 sp of Motif D, ch 2, sc in next ch-sp of Sleeve, (ch 4, sc in next ch-sp) twice.

Section 2**First Side**

Rows 16-24: Work same as Rows 5-13 of Section 1: First Side (joining to Motif D).

Center

With WS facing, join yarn with sl st at marker of Motif D.

Rows 16-24: Work same as Rows 5-13 of Section 1: Center (joining to Motifs C and D), skipping ch-1 sp of Row 15, and working one less (ch 4, sc in next ch-sp) rep on each row.

Second Side

With WS facing, join yarn with sl st at marker of Motif C.

Rows 16-24: Work same as Rows 5-13 of Section 1: Second Side (joining to Motif C), skipping ch-1 sp of Row 15, and working one less (ch 4, sc in next ch-sp) rep on each row.

Continue Chain Mesh

Row 25: Working all the way across piece, ch 3, sc in next ch-sp, *ch 4, sc in next ch-sp; rep from * across - 14 ch-sps.

Row 26 (beg join motifs): Ch 3, turn, sc in next ch-sp, ch 4, sc in next ch-sp, ch 1, sc in next ch-sp, ch 4, sc in next ch-sp, ch 2, sl st in any ch-5 sp of Motif E, (mark this sl st to re-join yarn later), ch 2, sc in next ch-sp of Sleeve, ch 2, sl st in next ch-5 sp of Motif E, ch 2, sc in next ch-sp of Sleeve, (ch 4, sc in next ch-sp) twice, ch 1, sc in next ch-sp, ch 4, sc in next ch-sp, ch 2, sl st in any ch-5 sp of Motif F, (mark this sl st to re-join yarn later), ch 2, sc in next ch-sp of Sleeve, ch 2, sl st in next ch-5 sp of Motif F, ch 2, sc in next ch-sp of Sleeve, (ch 4, sc in next ch-sp) twice.

Section 3**First Side**

Rows 27-35: Work same as Rows 16-24 of Section 2: First Side (joining to Motif F).

Center

With RS facing, join yarn with sl st at marker of Motif F.

Rows 27-35: Work same as Rows 16-24 of Section 2: Center (joining to Motifs E and F), skipping ch-1 sp of Row 26, and working one less (ch 4, sc in next ch-sp) rep on each row.

Second Side

With RS facing, join yarn with sl st at marker of Motif E.

Rows 27-35: Work same as Rows 16-24 of Section 2: Center (joining to Motif E), skipping ch-1 sp of Row 26, and working one less (ch 4, sc in next ch-sp) rep on each row.

Continue Chain Mesh

Row 36: Working all the way across piece, ch 3, sc in next ch-sp, *ch 4, sc in next ch-sp; rep from * across - 12 ch-sps.

Row 37 (beg join motifs): Ch 3, turn, sc in next ch-sp, ch 4, sc in next ch-sp, ch 1, sc in next ch-sp, ch 2, sl st in any ch-5 sp of Motif G, (mark this sl st to re-join yarn later), ch 2, sc in next ch-sp of Sleeve, ch 2, sl st in next ch-5 sp of Motif G, ch 2, sc in next ch-sp of Sleeve, ch 4, sc in next ch-sp, ch 1, sc in next ch-sp, ch 4, sc in next ch-sp, ch 2, sl st in any ch-5 sp of Motif H, (mark this sl st to re-join yarn later), ch 2, sc in next ch-sp of Sleeve, ch 2, sl st in next ch-5 sp of Motif H, ch 2, sc in next ch-sp of Sleeve, (ch 4, sc in next ch-sp) twice.

Section 4**First Side**

Rows 38-46: Work the same as Rows 27-35 of Section 3: First Side (joining to Motif H).

Center

With WS facing, join yarn with sl st at marker of Motif H.

Rows 38-46: Work same as Rows 27-35 of Section 3: Center (joining to Motifs G and H), skipping ch-1 sp of Row 37, and working one less (ch 4, sc in next ch-sp) rep on each row.

Second Side

With WS facing, join yarn with sl st at marker of Motif G.

Rows 38-46: Work same as Rows 27-35 of Section 3: Second Side (joining to Motif G), skipping ch-1 sp of Row 37, and working one less (ch 4, sc in next ch-sp) rep on each row.

Continue Chain Mesh

Row 47: Working all the way across piece, ch 3, sc in next ch-sp, *ch 4, sc in next ch-sp; rep from * across - 10 ch-sps.

Row 48 (beg join motifs): Ch 3, turn, sc in next ch-sp, ch 4, sc in next ch-sp, ch 2, sl st in any ch-5 sp of Motif I (mark this sl st to re-join yarn later), ch 2, sc in next ch-sp of Sleeve, ch 2, sl st in next ch-5 sp of Motif I, ch 2, sc in next ch-sp of Sleeve, (ch 4, sc in next ch-sp) twice, ch 2, sl st in any ch-5 sp of Motif J (mark this sl st to re-join yarn later), ch 2, sc in next ch-sp of Sleeve, ch 2, sl st in next ch-5 sp of Motif J, ch 2, sc in next ch-sp of Sleeve, (ch 4, sc in next ch-sp) twice.

Section 5**First Side**

Rows 49-57: Work the same as Rows 38-46 of Section 4: First Side (joining to Motif J).

Center

With RS facing, join yarn with sl st at marker of Motif J.

Rows 49-57: Work the same as Rows 38-46 of Section 4: Center (joining to Motifs I and J).

Second Side

With RS facing, join yarn with sl st at marker of Motif I.

Rows 49-57: Work the same as Rows 38-46 of Section 4: Second Side (joining to Motif I).

Continue Chain Mesh

Rows 58 and 59: Working all the way across piece, ch 3, sc in next ch-sp, *ch 4, sc in next ch-sp; rep from * across. Fasten off.

FINISHING

Sew long side edges of Sleeve, beg at widest end, to last 2 in. (5 cm), leave 1 in. (2.5 cm) open for thumb, sew final 1 in. (2.5 cm).

Cuff Edging

Join yarn with sl st in any ch-sp of narrowest end of Sleeve.

Rnd 1: Ch 2, 3 hdc in each ch-sp around; join with sl st in top of beg ch.

Rnd 2: Ch 2, hdc in each hdc around; join with sl st in top of beg ch.

Fasten off.

Top Edging

Join yarn with sl st in any ch-sp of widest end of Sleeve.

Rnds 1 and 2: Work Rnds 1 and 2 of cuff edging.

Rnd 3: Ch 2, *hdc in next 2 hdc, hdc2tog; rep from * around; join with sl st in top of beg ch.

Rnd 4: Ch 2, hdc in each hdc around; join with sl st in top of beg ch.

Fasten off.

Weave in ends.

ABBREVIATIONS / REFERENCES	
<small>Click for explanation and illustration</small>	
<u>beg = begin(s)(ning)</u>	<u>ch(s) = chain(s)</u>
<u>ch-space = space previously made</u>	<u>dc = double crochet</u>
<u>hdc = half double crochet</u>	<u>rep = repeat(s)(ing)</u>
<u>rnd(s) = round(s)</u>	<u>RS = right side</u>
<u>sc = single crochet</u>	<u>sk = skip</u>
<u>sl st = slip stitch</u>	<u>sp(s) = space(s)</u>
<u>st(s) = stitch(es)</u>	<u>WS = wrong side</u>
<u>yo = yarn over</u>	

Learn to crochet instructions: <http://learnToCrochet.LionBrand.com>

Every effort has been made to have the knitting and crochet instructions accurate and complete. We cannot be responsible for variance of individual knitters and crocheters, human errors, or typographical mistakes.

We want your project to be a success! If you need help with this or any other Lion Brand pattern, e-mail support is available 7 days per week. Just click [here](#) to explain your problem and someone will help you!

For hundreds of free patterns, visit our website www.LionBrand.com

To order visit our website www.e-yarn.com or call: (800) 258-YARN (9276) any time!

Copyright © 1998-2005 Lion Brand Yarn Company, all rights reserved. No pattern or other material may be reproduced -- mechanically, electronically, or by any other means, including photocopying -- without written permission of Lion Brand Yarn Company. If you would like to send a copy of this page to someone, click [here](#) and we will be happy to do it for you.