



**Free Crochet Pattern**  
**Lion Brand® Vanna's Choice®**  
**Rainbow Burst Tote**  
Pattern Number: L10481



**Free Crochet Pattern from Lion Brand Yarn**  
**Lion Brand® Vanna's Choice®**  
**Rainbow Burst Tote**  
Pattern Number: L10481

**SKILL LEVEL:** Easy

**SIZE:** One Size

**Finished Circumference** About 24 in. (61 cm) at widest point

**Finished Height** About 16 in. (40.5 cm)

**CORRECTIONS:** None as of Jan 26, 2012. To check for later updates, click [here](#).

**MATERIALS**

- 860-147 Lion Brand Vanna's Choice Yarn: Purple  
1 Ball (A)
- 860-112 Lion Brand Vanna's Choice Yarn: Raspberry  
1 Ball (B)
- 860-158 Lion Brand Vanna's Choice Yarn: Mustard  
1 Ball (C)
- 860-172 Lion Brand Vanna's Choice Yarn: Kelly Green  
1 Ball (D)
- 860-102 Lion Brand Vanna's Choice Yarn: Aqua  
1 Ball (E)
- 860-099 Lion Brand Vanna's Choice Yarn: Linen  
1 Ball (F)
- Lion Brand Crochet Hook - Size J-10 (6 mm)
- Large-Eye Blunt Needles (Set of 6)

**GAUGE:**

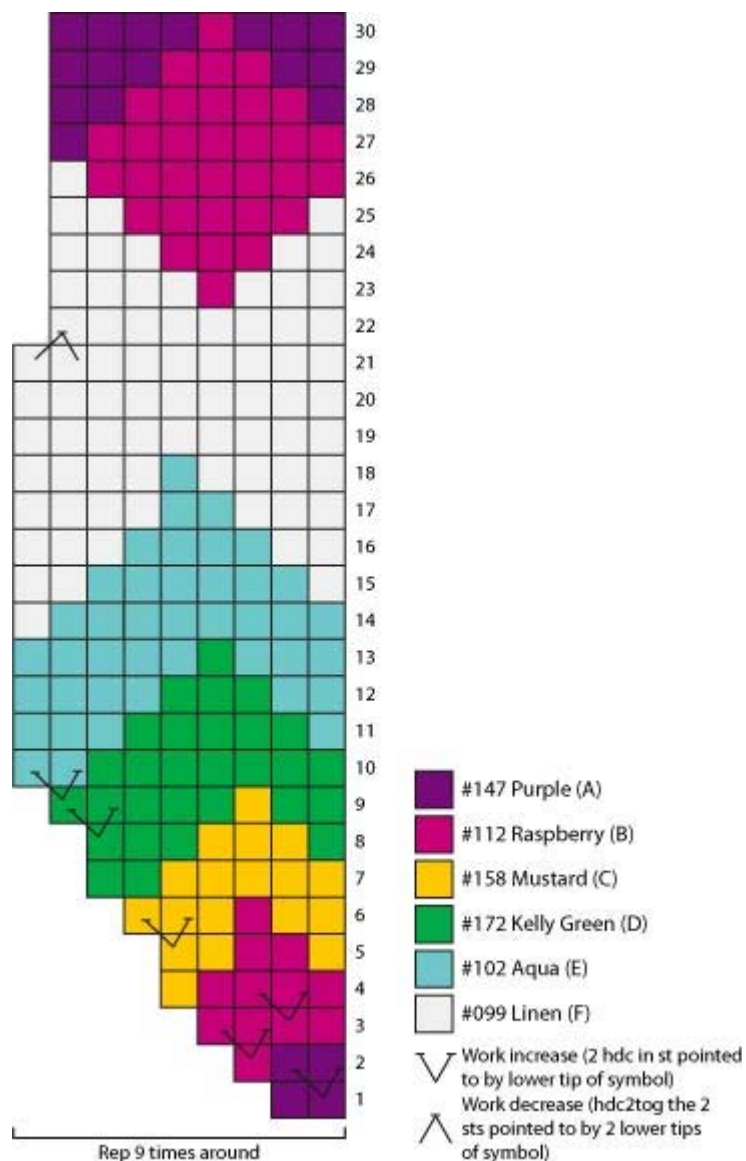
13 hdc and 10 rows = 4 in. (10 cm) BE SURE TO CHECK YOUR GAUGE. When you match the gauge in a pattern, your project will be the size specified in the pattern and the materials specified in the pattern will be sufficient. If it takes you fewer stitches and rows to make a 4 in. [10 cm] square, try using a smaller size hook or needles; if more stitches and rows, try a larger size hook or needles.

**STITCH EXPLANATION:**

**hdc2tog (hdc 2 sts together)** Yarn over, insert hook into st and draw up a loop. Yarn over, insert hook into next st and draw up a loop. Yarn over and draw through all 5 loops on hook - 1 st decreased.

**NOTES:**

1. Bag is worked in rnds; join at the ends of rnds, but do not turn.
2. On rnds that are worked with 2 colors, carry the color not in use across the top of sts, working the new color over the carried color.
3. To change color, work last st of old color to last yarn over. Yarn over with new color and draw through all loops on hook to complete st. Do not fasten off old color until instructed.
4. Leave a long yarn tail when adding a new color; weave this tail in when the project has been completed.
5. Color changes in Rnds 1-30 can be worked following written instructions or chart. If working from chart, read all rows from right to left. To maintain the color pattern, it is important to work increases in the correct locations. The chart indicates increase and decrease locations with special symbols explained in the chart key.



## TOTE

With A, ch 6; join with sl st in first ch to form a ring.

**Rnd 1:** Ch 1 (does not count as a st), 18 hdc in ring; join with sl st in first hdc - 18 sts at the end of this rnd.

**Rnd 2:** With A, ch 1, 2 hdc in same st as join, with B, hdc in next st, \*with A, 2 hdc in next st, with B, hdc in next st; rep from \* around; join with sl st in first hdc - 27 sts at the end of this rnd.

Fasten off A.

**Note:** Always work first st in same st as join.

**Rnd 3:** With B, ch 1, \*hdc in next 2 sts, 2 hdc in next st; rep from \* around; join with sl st in first hdc - 36 sts.

**Rnd 4:** Ch 1, \*with B, hdc in next st, 2 hdc in next st, hdc in next st, with C, hdc in next st; rep from \* around; join with sl st in first hdc - 45 sts.

**Rnd 5:** Ch 1, \*with C, hdc in next st, with B, hdc in next 2 sts, with C, hdc in next 2 sts; rep from \* around; join with sl st in first hdc.

**Rnd 6:** Ch 1, \*with C, hdc in next 2 sts, with B, hdc in next st, with C, hdc in next st, 2 hdc in next st; rep from \* around; join with sl st in first hdc - 54 sts.

Fasten off B.

**Rnd 7:** Ch 1, \*with C, hdc in next 5 sts, with D, 2 hdc in next st; rep from \* around; join with sl st in first hdc - 63 sts.

**Rnd 8:** Ch 1, \*with D, hdc in next st, with C, hdc in next 3 sts, with D, hdc in next 3 sts; rep from \* around; join with sl st in first hdc.

**Rnd 9:** Ch 1, \*with D, hdc in next 2 sts, with C, hdc in next st, with D, hdc in next 3 sts, 2 hdc in next st; rep from \* around; join with sl st in first hdc - 72 sts.

Fasten off C.

**Rnd 10:** Ch 1, \*with D, hdc in next 7 sts, with E, 2 hdc in next st; rep from \* around; join with sl st in first hdc - 81

sts.

**Rnd 11:** Ch 1, \*with E, hdc in next st, with D, hdc in next 5 sts, with E, hdc in next 3 sts; rep from \* around; join with sl st in first hdc.

**Rnd 12:** Ch 1, \*with E, hdc in next 2 sts, with D, hdc in next 3 sts, with E, hdc in next 4 sts; rep from \* around; join with sl st in first hdc.

**Rnd 13:** Ch 1, \*with E, hdc in next 3 sts, with D, hdc in next st, with E, hdc in next 5 sts; rep from \* around; join with sl st in first hdc.

Fasten off D.

**Rnd 14:** Ch 1, \*with E, hdc in next 8 sts, with F, hdc in next st; rep from \* around; join with sl st in first hdc.

**Rnd 15:** Ch 1, \*with F, hdc in next st, with E, hdc in next 6 sts, with F, hdc in next 2 sts; rep from \* around; join with sl st in first hdc.

**Rnd 16:** Ch 1, \*with F, hdc in next 2 sts, with E, hdc in next 4 sts, with F, hdc in next 3 sts; rep from \* around; join with sl st in first hdc.

**Rnd 17:** Ch 1, \*with F, hdc in next 3 sts, with E, hdc in next 2 sts, with F, hdc in next 4 sts; rep from \* around; join with sl st in first hdc.

**Rnd 18:** Ch 1, \*with F, hdc in next 4 sts, with E, hdc in next st, with F, hdc in next 4 sts; rep from \* around; join with sl st in first hdc.

Fasten off E.

**Rnds 19-21:** Ch 1, with F, hdc in each st around; join with sl st in first hdc.

**Rnd 22:** Ch 1, with F, \*hdc in next 7 sts, hdc2tog; rep from \* around; join with sl st in first hdc - 72 sts.

**Rnd 23:** Ch 1, \*with F, hdc in next 3 sts, with B, hdc in next st, with F, hdc in next 4 sts; rep from \* around; join with sl st in first hdc.

**Rnd 24:** Ch 1, \*with F, hdc in next 2 sts, with B, hdc in next 3 sts, with F, hdc in next 3 sts; rep from \* around; join with sl st in first hdc.

**Rnd 25:** Ch 1, \*with F, hdc in next st, with B, hdc in next 5 sts, with F, hdc in next 2 sts; rep from \* around; join with sl st in first hdc and change to B.

**Rnd 26:** Ch 1, \*with B, hdc in next 7 sts, with F, hdc in next st; rep from \* around; join with sl st in first hdc.  
Fasten off F.

**Rnd 27:** Ch 1, \*with B, hdc in next 7 sts, with A, hdc in next st; rep from \* around; join with sl st in first hdc.

**Rnd 28:** Ch 1, \*with A, hdc in next st, with B, hdc in next 5 sts, with A, hdc in next 2 sts; rep from \* around; join with sl st in first hdc.

**Rnd 29:** Ch 1, \*with A, hdc in next 2 sts, with B, hdc in next 3 sts, with A, hdc in next 3 sts; rep from \* around; join with sl st in first hdc.

**Rnd 30:** Ch 1, \*with A, hdc in next 3 sts, with B, hdc in next st, with A, hdc in next 4 sts; rep from \* around; join with sl st in first hdc.

Fasten off B.

**Rnd 31:** Ch 1, with A, \*hdc in next 2 sts, hdc2tog, hdc in next 3 sts, hdc2tog; rep from \* around; join with sl st in first hdc of this rnd.

Do not fasten off A.

### Shape First Handle

**Notes:** Handles are worked back and forth in rows with A only.

**Row 32:** Ch 1, hdc in next 21 sts; leave remaining sts unworked for top of Tote and 2nd handle - 21 hdc at the end of this row.

**Rows 33 and 34:** Ch 1, turn, hdc2tog, hdc in each st across to last 2 sts, hdc2tog - 17 sts at the end of Row 34.

**Row 35:** Ch 1, turn, hdc in each st across.

**Row 36:** Ch 1, turn, sl st in first 2 sts, ch 45, sk next 15 sts, sl st in last 2 sts.

**Row 37:** Turn, sk first 2 sl sts, hdc in each ch across, sk next sl st, sl st in last sl st.

Fasten off.

**Shape Second Handle** From RS, sk next 7 unworked sts of top of Tote, join A with sl st in next st.

Rep Rows 32-37.

Do not fasten off.

**Edging Rnd (RS):** Ch 1, turn, sl st evenly around edge of handles and top of Tote; join with sl st in first sl st.

Fasten off.

### FINISHING

Weave in ends.

## ABBREVIATIONS / REFERENCES

Click for explanation and illustration

<u>beg = begin(s)(ning)</u>	<u>ch(s) = chain(s)</u>
<u>hdc = half double crochet</u>	<u>rep = repeat(s)(ing)</u>
<u>rnd(s) = round(s)</u>	<u>RS = right side</u>
<u>sk = skip</u>	<u>sl st = slip stitch</u>
<u>st(s) = stitch(es)</u>	

Learn to crochet instructions: <http://learnToCrochet.LionBrand.com>

Every effort has been made to have the knitting and crochet instructions accurate and complete. We cannot be responsible for variance of individual knitters and crocheters, human errors, or typographical mistakes.

\**Vanna's Choice®* (Article #860). 100% Premium Acrylic

**400, 401, 403:** 92% Acrylic, 8% Rayon

**402:** 96% Acrylic, 4% Rayon: package size: **Solids:** 3.5 oz (100 g), 170 yards (156 m)

**Prints, Tweeds, & Heathers:** 3 ozs (85 g), 145 yards (133 meters)



We want your project to be a success! If you need help with this or any other Lion Brand pattern, e-mail support is available 7 days per week. Just click [here](#) to explain your problem and someone will help you!

**For thousands of free patterns, visit our website [www.LionBrand.com](http://www.LionBrand.com)**

**To order visit our website [www.lionbrand.com](http://www.lionbrand.com) or call: (800) 258-YARN (9276) any time!**

Copyright ©1998-2011 Lion Brand Yarn Company, all rights reserved. No pattern or other material may be reproduced -- mechanically, electronically, or by any other means, including photocopying -- without written permission of Lion Brand Yarn Company.