



Free Knitting Pattern
Lion Brand® Alpine Wool - Fishermen's Wool
Fall Wreath

Pattern Number: L0109AD



Free Knitting Pattern from Lion Brand Yarn

Lion Brand Alpine Wool - Fishermen's Wool

Fall Wreath

Pattern Number: L0109AD

SKILL LEVEL: Easy +

SIZE: One Size

About 16 in. (40.5 cm) diameter

CORRECTIONS: None as of Aug 23, 2010. To check for later updates, click [here](#).

MATERIALS

- 822-174 [Lion Brand Alpine Wool: Olive](#)
4 Balls (A)
- 822-115 [Lion Brand Alpine Wool: Chili](#)
4 Balls (B)
- 822-135 [Lion Brand Alpine Wool: Cinnamon](#)
5 Balls (C)
- 150-126 [Lion Brand Fishermen's Wool Yarn: Nature's Brown](#)
1 Ball (D)
- [Lion Brand Knitting Needles - Size 10 \[6 mm\]](#)
- [Large-Eye Blunt Needles \(Set of 6\)](#)
- Additional Materials
Purchased foam wreath 16 in. (40.5 cm) diameter
5 sheets of medium weight cardboard, each about 8 x 10 in. (20.5 x 63.5 cm)
Glue stick
Dressmaker's marking chalk
Small, very sharp scissors
Flexible medium gauge craft wire
Scissors to cut craft wire
Craft glue
Sewing needle and thread

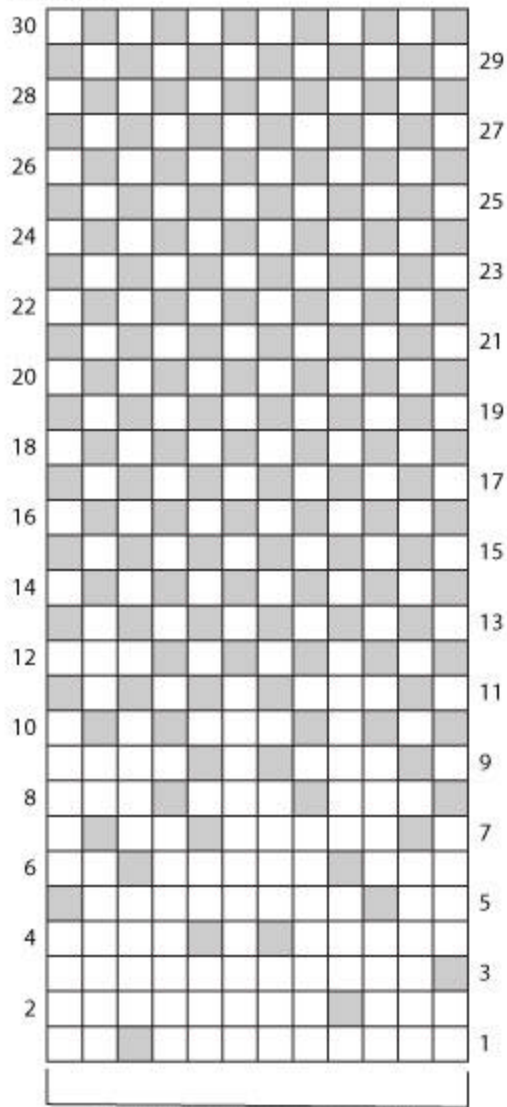
GAUGE:

Exact gauge is not important to this project

NOTES:

1. Wreath is wrapped first, then yarn is set aside for wrapping Leaf stems.
2. Two large St st (k on RS, p on WS) pieces are knit and then felted for Leaves.
3. Leaves are cut from felted fabric using templates or fallen leaves. The Leaf templates provided measure from 3 1/2-5 1/4 in. (9-13.5 cm).
4. Finished Leaves are glued to wrapped Wreath.

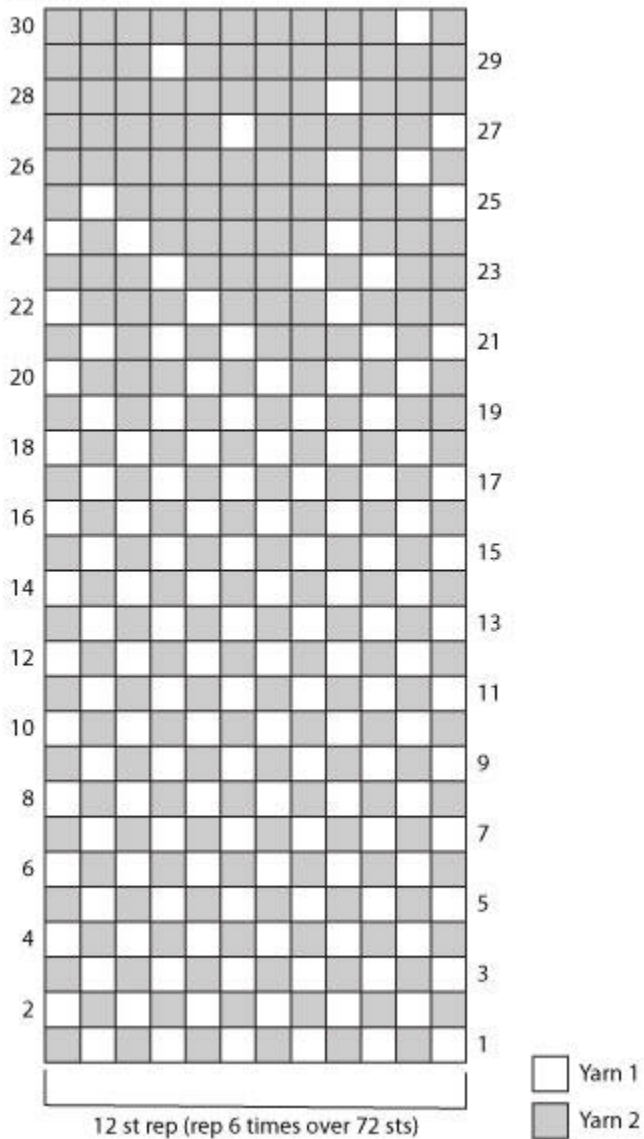
CHART I



Yarn 1
Yarn 2

12 st rep (rep 6 times over 72 sts)

CHART II



WREATH

Apply a small amount of glue to foam wreath, then wrap evenly with one strand each of A and D held tog. Continue applying small amounts of glue, then wrapping with one strand each of A and D held tog until wreath is completely covered.

LEAVES

Notes:

1. Before knitting fabric for Leaves, set several yards (meters) of each color yarn aside for wrapping wire for stems.
2. St st pieces for Leaves is worked using 2 colors per row. Carry color not in use across WS of work.
3. For ease in working and in felting, pattern is written for making 2 separate pieces of St st for Leaves.
4. Read Charts from right to left on RS rows and from left to right on WS rows.

First Leaf Piece

With A, cast on 72 sts.

With A, work in St st for 20 rows.

Next Row (RS): With A as Yarn 1 and C as Yarn 2, rep 12 sts of Row 1 of Chart I six times across row. Continue to work Chart I as established, until all 30 rows of Chart I have been completed.

Next Row (RS): With A as Yarn 1 and C as Yarn 2, rep 12 sts of Row 1 of Chart II six times across row. Continue to work Chart II as established, until all 30 rows of Chart II have been completed.

With C, work in St st for 40 rows.

Next Row (RS): With C as Yarn 1 and B as Yarn 2, rep 12 sts of Row 1 of Chart I six times across row. Continue to work Chart I as established, until all 30 rows of Chart I have been completed.

Next Row (RS): With C as Yarn 1 and B as Yarn 2, rep 12 sts of Row 1 of Chart II six times across row. Continue to work Chart II as established, until all 30 rows of Chart II have been completed.

With B, work in St st for 20 rows.
Bind off.

Second Leaf Piece

With B, cast on 72 sts.

With B, work in St st for 20 rows.

Next Row (RS): With B as Yarn 1 and C as Yarn 2, rep 12 sts of Row 1 of Chart I six times across row.
Continue to work Chart I as established, until all 30 rows of Chart I have been completed.

Next Row (RS): With B as Yarn 1 and C as Yarn 2, rep 12 sts of Row 1 of Chart II six times across row.
Continue to work Chart II as established, until all 30 rows of Chart II have been completed.

With C, work in St st for 40 rows.

Next Row (RS): With C as Yarn 1 and D as Yarn 2, rep 12 sts of Row 1 of Chart I six times across row.
Continue to work Chart I as established, until all 30 rows of Chart I have been completed.

Next Row (RS): With C as Yarn 1 and D as Yarn 2, rep 12 sts of Row 1 of Chart II six times across row.
Continue to work Chart II as established, until all 30 rows of Chart II have been completed.

With D, work in St st for 40 rows.

Next Row (RS): With D as Yarn 1 and A as Yarn 2, rep 12 sts of Row 1 of Chart I six times across row.
Continue to work Chart I as established, until all 30 rows of Chart I have been completed.

Next Row (RS): With D as Yarn 1 and A as Yarn 2, rep 12 sts of Row 1 of Chart II six times across row.
Continue to work Chart II as established, until all 30 rows of Chart II have been completed.

With A, work in St st for 40 rows.

Bind off.

Felting

Weave in ends.

Wash pieces by machine on a hot wash/cold rinse cycle with detergent and several pieces of clothing to agitate. To felt additionally, dry by machine on a regular setting until almost dry. Remove from dryer and pull into shape.

Notes:

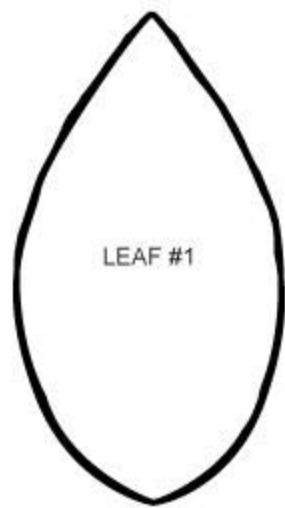
1. If desired, gather a few fallen leaves and use these as your templates for cutting felt.
2. Before cutting Leaves from felt, decide which portions of felt you'd like to use. The RS and WS of felt will differ slightly in looks, cut Leaves from both sides of felt to create a natural look.
3. Our wreath has 54 Leaves cut in a variety of the template shapes.

Print out Leaf templates. Using glue stick, glue each leaf template to cardboard. Allow glue to dry, then cut along outside line of each Leaf. Lay cardboard templates onto felt and trace around outside edge with chalk for desired number of Leaves. Using small, sharp scissors, cut out felt Leaves.

For each Leaf, cut a piece of wire in desired length to make center leaf vein and stem. Hold a length of matching or contrasting yarn against wire. Begin wrapping wire, hiding yarn end under wraps to secure. When wire has been completely wrapped, trim yarn end. Apply a very small dot of glue to wrapped wire and press yarn end into glue to secure. Allow to dry. With sewing needle and thread, sew wrapped wire down center of each leaf, allowing end of wire to extend as stem.

FINISHING

Arrange Leaves onto foam wreath as desired, then glue in place.



LEAF #1









ABBREVIATIONS / REFERENCES Click for explanation and illustration	
<u>k = knit</u>	<u>p = purl</u>
<u>rep = repeat(s)(ing)</u>	<u>RS = right side</u>
<u>St st = Stockinette stitch</u>	<u>st(s) = stitch(es)</u>
<u>tog = together</u>	<u>WS = wrong side</u>

Learn to knit instructions: <http://learnToKnit.LionBrand.com>

Every effort has been made to have the knitting and crochet instructions accurate and complete. We cannot be responsible for variance of individual knitters and crocheters, human errors, or typographical mistakes.

We want your project to be a success! If you need help with this or any other Lion Brand pattern, e-mail support is available 7 days per week. Just click [here](#) to explain your problem and someone will help you!

For thousands of free patterns, visit our website www.LionBrand.com

To order visit our website www.lionbrand.com or call: (800) 258-YARN (9276) any time!

Copyright © 1998-2009 Lion Brand Yarn Company, all rights reserved. No pattern or other material may be reproduced -- mechanically, electronically, or by any other means, including photocopying -- without written permission of Lion Brand Yarn Company.