



**Free Knitting Pattern**  
**Lion Brand® Wool-Ease®**  
**Little Lamb Sock Critter**  
Pattern Number: 90572AD



This sock-inspired stuffed sheep is cuddly and adorable! A perfect Easter gift for any child.

**Free Knitting Pattern from Lion Brand Yarn**  
**Lion Brand® Wool-Ease®**  
**Little Lamb Sock Critter**  
Pattern Number: 90572AD

**SKILL LEVEL:** Advanced Intermediate

**SIZE:** One Size

About 9 1/2 in. (24 cm) tall

**CORRECTIONS:** (applied Nov 20, 2012)

**LAMB**

**LEG (make 2)**

**Rows 9 and 10:** With A, work Rows 1 and 2 of Moss st.

**Rows 11 and 12:** With A, work Rows 3 and 4 of Moss st. Rep last 4 rows once more.

**Next Row (~~WS~~):** Bind off 3 sts, work in Moss st as established to end of row – 13 sts at the end of this row.

**MATERIALS**

- 620-099 Lion Brand Wool-Ease Yarn: Fisherman  
1 Ball (A)
- 620-152 Lion Brand Wool-Ease Yarn: Oxford Grey  
1 Ball (B)
- Lion Brand Knitting Needles- Size 5 [3.75 mm]
- Lion Brand Double-Pointed Needles - Size 5
- Lion Brand Split Ring Stitch Markers
- Lion Brand Cable Needles (Set of 2)
- Lion Brand Large-Eye Blunt Needles (Set of 6)
- Additional Materials
  - Small amount of contrast yarn
  - Fiberfill stuffing
  - Small piece of black or brown felt
  - Sewing needle and thread

**GAUGE:**

18 sts + 26 rows = 4 in. (10 cm) in St st (k on RS, p on WS).

BE SURE TO CHECK YOUR GAUGE. When you match the gauge in a pattern, your project will be the size specified in the pattern and the materials specified in the pattern will be sufficient. If it takes you fewer stitches and rows to make a 4 in. [10 cm] square, try using a smaller size hook or needles; if more stitches and rows, try a larger size hook or needles.

**STITCH EXPLANATION:**

**Cable Cast On** \*Insert right needle between first 2 sts on left needle; wrap yarn and pull through (as if knitting a st); transfer new st to left needle. Rep from \* for desired number of sts.

**RT (Right Twist):** K2tog and leave on left needle, then with right needle, go between the 2 sts and knit the first st again.

**1/1 LPC (1 over 1 left purl cross):** Slip 1 st to cable needle and hold in front, p1, then k1 from cable needle.

**1/1 RPC (1 over 1 right purl cross):** Slip 1 st to cable needle and hold in back, k1, then p1 from cable needle.

**kfb (knit in front and back)** Knit next st without removing it from left needle, then k through back of same st – 1 st increased.

**ssk (slip, slip, knit)** Slip next 2 sts as if to knit, one at a time, to right needle; insert left needle into fronts of these 2 sts and knit them tog – 1 st decreased.

**ssp (slip, slip, purl)** Slip next 2 sts as if to knit, one at a time, to right needle; pass them back to left needle; purl them tog through back loops – 1 st decreased.

### PATTERN EXPLANATION

#### Moss St (multiple of 2)

**Rows 1 and 2:** \*P1, k1; rep from \* across.

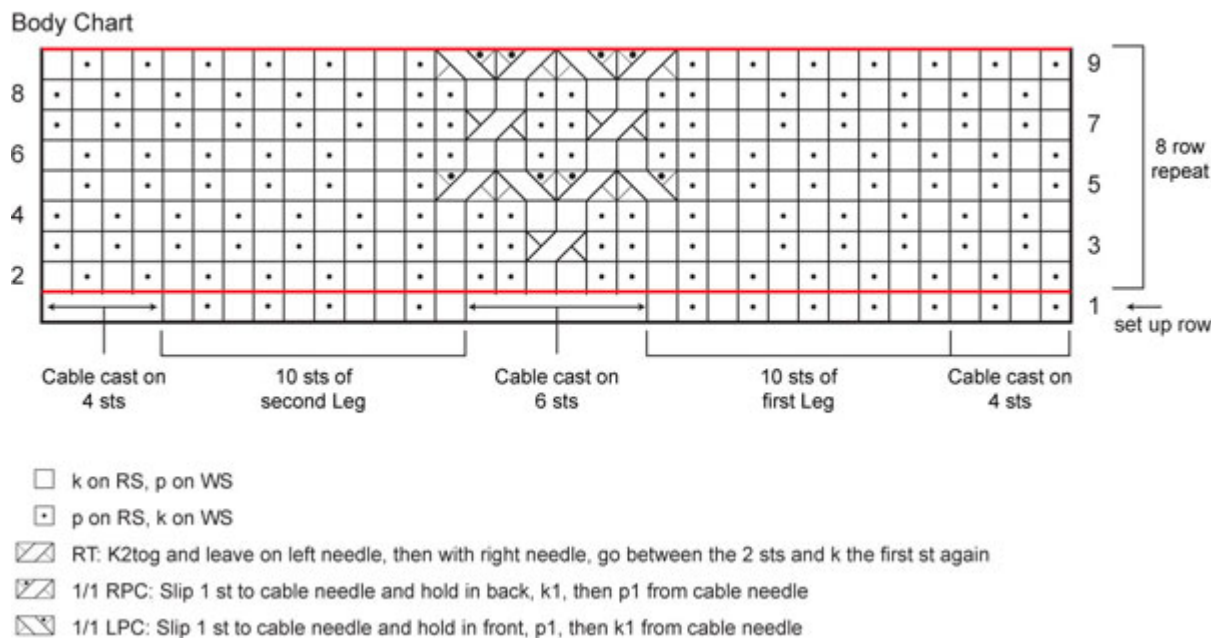
**Rows 3 and 4:** \*K1, p1; rep from \* across.

Rep Rows 1-4 for Moss st.

### NOTES:

1. If desired, 2 double pointed needles can be substituted for straight knitting needles. When working in rows on 2 double pointed needles, take care that sts do not drop off the ends of the needles by wrapping one end of each double pointed needle with an elastic band.
2. Body and legs are worked back and forth in rows; head is worked in a similar way to knitting a sock; arms, ears and tail are worked in the round.
3. Pattern is written for a Critter with felt eyes. Do NOT use button eyes if Critter is for a child.

90572.WE  
Little Lamb



### LAMB

#### LEG (make 2)

With straight needles and B, and leaving a long beg tail, cast on 8 sts. Work back and forth in rows.

**Row 1 (RS):** Kfb in each st across – 16 sts at the end of this row.

**Rows 2-6:** Beg with a WS row, work in St st (k on RS, p on WS). Change to A.

**Row 7:** With A, knit.

**Row 8:** \*K1, p1; rep from \* across.

**Rows 9 and 10:** With A, work Rows 1 and 2 of Moss st.

**Rows 11 and 12:** With A, work Rows 3 and 4 of Moss st. Rep last 4 rows once more.

**Next Row:** Bind off 3 sts, work in Moss st as established to end of row – 13 sts at the end of this row.

**Next Row:** Bind off 3 sts, work in Moss st as established to end of row – 10 sts at the end of this row. Cut yarn. Thread contrast yarn through Leg sts and set Leg aside. Make a second Leg in same way, but keep sts on needle and do not cut yarn.

**Both Legs:** Thread beg tail (at cast on) into blunt needle and weave through cast-on rnd. Pull tog tightly and fasten off.

## Body

### Notes:

1. Pattern sts on Body can be worked from chart OR by following written instructions below.
2. On Row 1, remove contrast yarn from Leg sts as you knit them.

**Row 1 (RS):** With RS of second Leg facing, and using working yarn from second Leg, cable cast on 4 sts, (p1, k1) twice across these 4 sts, (p1, k1) 5 times over sts of second Leg, turn, cable cast on 6 sts, turn, working across sts of first Leg, k1, p1, k2, (p1, k1) 3 times, turn, cable cast on 4 sts – 34 sts at the end of this row.

**Row 2 (WS):** (P1, k1) 5 times, p2, k1, p1, k2, p2, k2, (p1, k1) 7 times.

**Row 3:** (K1, p1) 5 times, k2, p1, k1, p2, RT, p2, (k1, p1) 7 times.

**Row 4:** (K1, p1) 7 times, k2, p2, k2, p1, k1, p2, (k1, p1) 5 times.

**Row 5:** (P1, k1) 6 times, p1, (1/1 LPC, 1/1 RPC) twice, p1, k2, (p1, k1) 5 times.

**Row 6:** (P1, k1) 5 times, (p2, k2) 3 times, (p1, k1) 6 times.

**Row 7:** (K1, p1) 5 times, k2, (p2, RT) twice, p2, (k1, p1) 6 times.

**Row 8:** (K1, p1) 6 times, (k2, p2) 3 times, (k1, p1) 5 times.

**Row 9:** (P1, k1) 6 times, p1, (1/1 RPC, 1/1 LPC) twice, p1, k2, (p1, k1) 5 times.

**Rows 10-17:** Rep Rows 2-9.

**Rows 18-22:** Rep Rows 2-6.

**Row 23:** K2tog, (p1, k1) across to last 2 sts, ssp – 32 sts. Divide sts onto 3 double pointed needles as follows: 8 sts on needle #1, 16 sts on needle #2, and 8 sts on needle #3. Join for working in the rnd. Place marker for beg of rnd.

**Rnds 24-30:** \*K1, p1; rep from \* around.

## Shape Head

**Note:** Back and top of head are worked in rows across sts on needles #1 and #3 only (as when working a sock heel). The sts on needle #2 will be worked later, when shaping face.

### Back of Head

**Row 1:** With A, (k1, p1) 4 times across sts on needle #1, turn.

**Row 2:** (K1, p1) 4 times across sts on needle #1, then (k1, p1) 4 times across needle #3, turn. Work back and forth across 16 sts on needles #1 and #3 only.

**Rows 3 and 4:** (P1, k1) 8 times.

**Rows 5 and 6:** (K1, p1) 8 times.

**Rows 7 and 8:** Rep Rows 3 and 4.

**Rows 9-12:** Rep Rows 5-8.

### Shape Top of Head

**Note:** Beg short row shaping for top of head as follows:

**Row 1:** Sl 1, (p1, k1) 4 times, k2tog, k1, turn.

**Row 2:** Sl 1, k1, p1, k1, p2tog, p1, turn.

**Row 3:** Sl 1, (p1, k1) twice, k2tog, k1, turn.

**Row 4:** Sl 1, (k1, p1) twice, k1, p2tog, p1, turn.

**Row 5:** Sl 1, (p1, k1) 3 times, k2tog, k1, turn.

**Row 6:** Sl 1, (k1, p1) 3 times, k1, p2tog, p1, turn – 10 head sts rem.

### Shape Face

**Note:** Work now proceeds in the rnd. Sts are worked all the way around the edges of the top and back of head, and over the held sts on needle #2 to complete the first rnd.

**Set Up Rnd (RS):** On needle #1, k across 10 rem sts of head, pick up and knit 10 sts along side of back of head; on needle #2, k6, ssk, k2tog, k6; on needle #3, pick up and knit 10 sts along other side of back of head; then k across first 5 head sts (the same sts worked at the beg of this rnd) – 44 sts at the end of this rnd. Place marker for beg of rnd.

**Rnd 1:** On needle #1, k3, ssk, k to last 2 sts, k2tog; on needle #2, k5, ssk, k2tog, k5; on needle #3, ssk, k to last 5 sts, k2tog, k3 – 38 sts at the end of this rnd.

**Rnd 2:** Knit.

**Rnd 3:** On needle #1, k3, ssk, k to last 2 sts, k2tog; on needle #2, k; on needle #3, ssk, k to last 5 sts, k2tog, k3 – 34 sts at the end of this rnd.

**Rnd 4:** Knit. Cut A and continue with B only for face.

**Rnd 5:** With B on needle #1, k3, ssk, k to last 2 sts, k2tog; on needle #2, k across; on needle #3, ssk, k to last 5 sts, k2tog, k3 – 30 sts at the end of this rnd.

**Rnd 6:** Knit.

**Rnds 7 – 9:** Rep Rnds 5 and 6 – 22 sts at the end of Rnd 9.

**Rnds 10 – 12:** Knit. At the end of Rnd 12, beg stuffing head, and continue to stuff head as work progresses.

**Rnd 13:** K2, k2tog, k5, ssk, k2tog, k5, ssk, k2 – 18 sts at the end of this rnd.

**Rnd 14:** Knit.

**Rnd 15:** K1, k2tog, k4, ssk, k2tog, k4, ssk, k1 – 14 sts at the end of this rnd.

**Rnd 16:** K2tog, k3, ssk, k2tog, k3, ssk – 10 sts at the end of this rnd. Cut yarn. Thread tail into blunt needle and thread through rem sts. Finish stuffing head, then pull sts tog tightly and fasten off.

### ARM (make 2)

With double pointed needles and B and leaving a long beg tail, cast on 8 sts. Divide sts evenly onto 4 double pointed needles. Join, being careful not to twist sts. Place marker for beg of rnd.

**Rnd 1:** Kfb in each st around – 16 sts at the end of this rnd.

**Rnds 2-6:** Work in St st worked in the rnd (k every rnd).

**Rnd 7:** Change to A, work in St st.

**Rnd 8:** \*K1, p1; rep from \* around.

**Rnds 9 and 10:** \*P1, k1; rep from \* around.

**Rnds 11 and 12:** \*K1, p1; rep from \* around. Rep last 4 rnds once more. Bind off. Cut yarn leaving a long tail for sewing. Thread beg tail (at cast on) into blunt needle and weave through sts of cast-on rnd. Pull tog tightly and fasten off. Stuff Arm lightly.

### EAR (make 2)

With double pointed needles and A and leaving a long beg tail, cast on 8 sts. Divide sts evenly onto 4 double pointed needles. Join, being careful not to twist sts. Place marker for beg of rnd.

**Rnd 1:** Kfb in each st around – 16 sts at the end of this rnd.

**Rnds 2 and 3:** \*P1, k1; rep from \* around.

**Rnds 4 and 5:** \*K1, p1; rep from \* around.

**Rnds 6 and 7:** Rep Rnds 2 and 3.

**Rnds 8 and 9:** Rep Rnds 4 and 5.

**Rnds 10 and 11:** Rep Rnds 2 and 3. Rep last 4 rnds once more. Bind off. Cut yarn leaving a long tail for sewing. Thread beg tail into blunt needle and weave through sts of cast-on rnd. Pull tog tightly and fasten off. Do not stuff Ears.

### TAIL

Make same as for Ear. Do not stuff Tail.

### FINISHING

Sew opening between legs closed. Stuff body, then sew body closed. Seam Legs, stuff lightly before finishing seam. Sew top edge of Arms closed, then sew Arms to Body. Sew Ears to sides of Head. Flatten Tail and sew to back of Body. From felt, cut 3 small circles for eyes and nose. With sewing needle and thread, sew felt circles to face. To allow Critter to sit: With matching yarn, sew a straight line across lower edge of body just above top of Legs, sewing through all layers and pushing stuffing slightly to either side of stitching. Weave in ends.

<b>ABBREVIATIONS / REFERENCES</b>	
Click for explanation and illustration	
<u>beg = begin(s)(ning)</u>	<u>k = knit</u>
<u>k2tog = knit 2 together</u>	<u>p = purl</u>
<u>p2tog = purl 2 together</u>	<u>rem = remain(s)(ing)</u>
<u>rep = repeat(s)(ing)</u>	<u>rnd(s) = round(s)</u>
<u>RS = right side</u>	<u>sl = slip</u>
<u>St st = Stockinette stitch</u>	<u>st(s) = stitch(es)</u>
<u>WS = wrong side</u>	

---

Every effort has been made to have the knitting and crochet instructions accurate and complete. We cannot be responsible for variance of individual knitters and crocheters, human errors, or typographical mistakes.

\**Wool-Ease®* (Article #620).

- *Solid, Heather, Twist*: 80% acrylic, 20% wool
- *Sprinkles, Wheat, Mushroom, Rainbow Mist*: 86% acrylic, 10% wool, 4% rayon
- *Glitter/Multi-colors*: 78% acrylic, 19% wool, 3% polyester
- *Frosts*: 70% acrylic, 20% wool, 10% polyamide
- *Prints*: 80% acrylic, 20% wool

; package size: **Solid, Heather, Twist**: 3 oz/85g; 197 yd/180m balls  
**Sprinkles, Wheat, Mushroom, Rainbow Mist**: 3 oz/85g; 197 yd/180m balls  
**Glitter/Multi-colors**: 2.5 oz./70g; 162 yd/146m balls  
**Frosts**: 2.5 oz./70g; 162 yd/146m balls  
**Prints**: 2.5 oz/70g; 162 yd/146m balls



We want your project to be a success! If you need help with this or any other Lion Brand pattern, e-mail support is available 7 days per week. Just click [here](#) to explain your problem and someone will help you!

**For thousands of free patterns, visit our website [www.LionBrand.com](http://www.LionBrand.com)**

**To order visit our website [www.lionbrand.com](http://www.lionbrand.com) or call: (800) 258-YARN (9276) any time!**

Copyright ©1998-2011 Lion Brand Yarn Company, all rights reserved. No pattern or other material may be reproduced -- mechanically, electronically, or by any other means, including photocopying -- without written permission of Lion Brand Yarn Company.