



Free Crochet Pattern
Lion Brand® Landscapes®
Two Triangles Shawl
Pattern Number: L70022
Designed by Edita Ostrova



SKILL LEVEL – Easy

SIZE

About 19 1/2 x 39 in. (49.5 x 99 cm)

MATERIALS

- Lion Brand® Landscapes® (Art. #545)
 - 210 Rain Forest 1 ball (A)
 - 212 Volcano 1 ball (B)
- Lion Brand® crochet hook size K-10.5 (6.5 mm)
- Lion Brand® large-eyed blunt needle



GAUGE

13 1/2 sts + 13 rows = about 4 in. (10 cm).

Note: Each sc and ch-1 sp count as 1 st.

BE SURE TO CHECK YOUR GAUGE.

STITCH EXPLANATIONS

sc2tog (sc 2 sts together) (Insert hook in next st and draw up a loop) twice, yarn over and draw through all 3 loops on hook – 1 st decreased. **Note:** Each sc and ch-1 sp count as 1 st. In this design, the sc2tog is worked over an sc and a ch-1 sp.

sc3tog (sc 3 sts together) (Insert hook in next st and draw up a loop) 3 times, yarn and draw through all 4 loops on hook – 2 sts decreased. **Note:** Each sc and ch-1 sp count as 1 st. In this design, the sc3tog is worked over 2 sc and the ch-1 sp between the sc sts.

NOTES

1. Shawl is made from 2 triangles. Both triangles are worked back and forth in rows.
2. The first triangle is worked, then stitches are worked along the straight side edge of the first triangle to begin the second triangle.
3. An edging is worked around the outside edge of the Shawl.
4. For those who find a visual helpful, we've included a stitch diagram.

SHAWL

First Triangle

With A, ch 2.

Row 1: (Sc, ch 1, sc) in 2nd ch from hook – you will have 2 sc and 1 ch-1 sp in this row.

Row 2: Ch 1, turn, sc in first sc, ch 1, sc in next ch-1 sp, ch 1, sc in last sc – 3 sc and 2 ch-1 sps.

Row 3: Ch 1, turn, sc in first sc, ch 1, sc in next ch-1 sp, ch 1, sk next sc, sc in next ch-1 sp, sc in last sc – 4 sc and 2 ch-1 sps.

For thousands of free patterns, visit our website www.LionBrand.com

To order visit our website www.lionbrand.com or call: (800) 258-YARN (9276) any time!

Copyright ©1998-2017 Lion Brand Yarn Company, all rights reserved.

No pattern or other material may be reproduced -- mechanically, electronically, or by any other means, including photocopying - without written permission of Lion Brand Yarn Company.

Row 4: Ch 1, turn, sc in first sc, (ch 1, sk next sc, sc in next ch-1 sp) twice, ch 1, sc in last sc – 4 sc and 3 ch-1 sps.

Row 5: Ch 1, turn, sc in first sc, ch 1, sc in next ch-1 sp, (ch 1, sk next sc, sc in next ch-1 sp) twice, sc in last sc – 5 sc and 3 ch-1 sps.

Row 6: Ch 1, turn, sc in first sc, *ch 1, sk next sc, sc in next ch-1 sp; rep from * to last sc, ch 1, sc in last sc – 5 sc and 4 ch-1 sps.

Row 7: Ch 1, turn, sc in first sc, ch 1, sc in next ch-1 sp, *ch 1, sk next sc, sc in next ch-1 sp; rep from * to last sc, sc in last sc – 6 sc and 4 ch-1 sps.

Rows 8-63: Rep Rows 6 and 7 for 28 more times – 34 sc and 32 ch-1 sps.

Fasten off.

Second Triangle

Join B with sl st in end of Row 1 so that you are ready to work in ends of rows along straight side edge of first triangle.

Row 1: Ch 1, sc in end of same row, *ch 1, sk end of next row, sc in end of next row; rep from * to end of straight side edge – 32 sc and 31 ch-1 sps.

Row 2: Ch 1, turn, sc in first sc, sc in next ch-1 sp, *ch 1, sk next sc, sc in next ch-1 sp; rep from * to last 2 sc, ch 1, sk next sc, sc2tog – 32 sc and 30 ch-1 sps.

Row 3: Ch 1, turn, sc2tog, *ch 1, sk next sc, sc in next ch-1 sp; rep from * to last 2 sc, ch 1, sk next sc, sc in last sc – 31 sc and 30 ch-1 sps.

Rows 4-61: Rep Rows 2 and 3 for 29 more times – 2 sc and 1 ch-1 sp.

Row 62: Ch 1, turn, sc3tog.

Do NOT fasten off.

Edging

Round 1: Do not turn, working along diagonal edge, *ch 3, sk next 2 rows or sts, sl st in end of next row, st or lower tip of Shawl; rep from * all the way around outer edge of Shawl working last sl st in base of beg ch-3.

Fasten off.

FINISHING

Weave in ends.

ABBREVIATIONS

beg = begin(ning)(s)

ch = chain

ch-sp(s) = chain space(s) previously made

rep = repeat

sc = single crochet

sk = skip

sl st = slip stitch

st(s) = stitch(es)

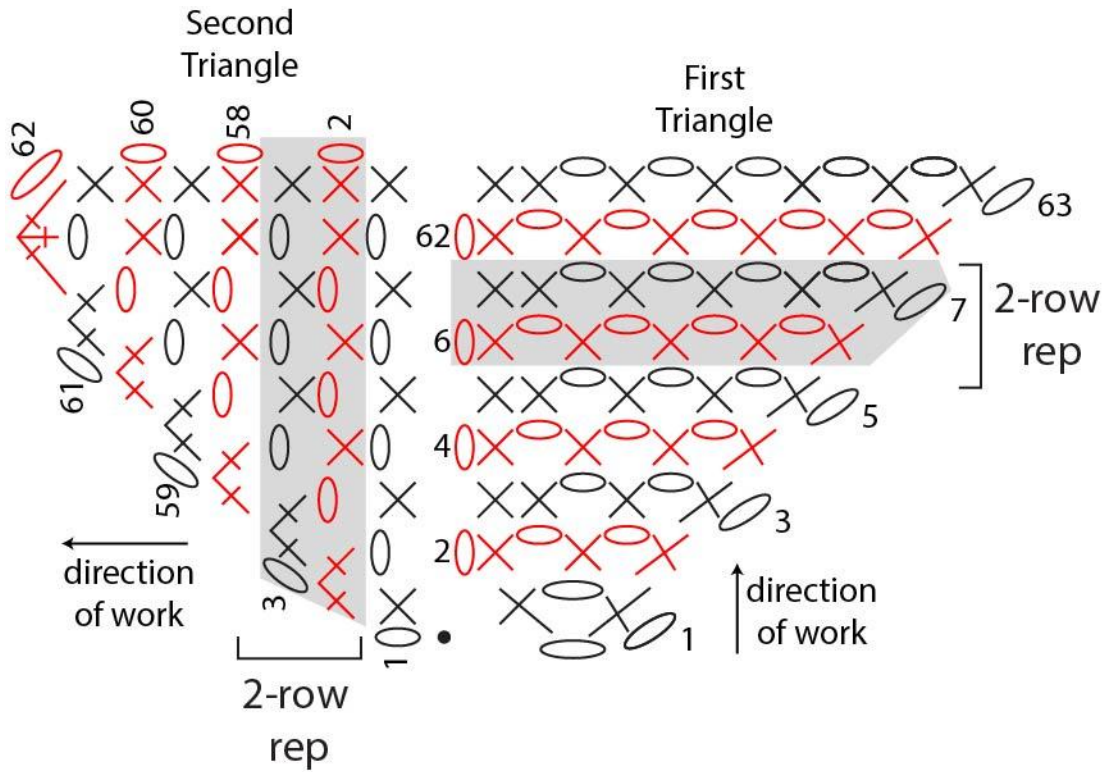
Every effort has been made to produce accurate and complete instructions. We cannot be responsible for variance of individual crafters, human error, or typographical mistakes.

For thousands of free patterns, visit our website www.LionBrand.com

To order visit our website www.lionbrand.com or call: (800) 258-YARN (9276) any time!

Copyright ©1998-2017 Lion Brand Yarn Company, all rights reserved.

No pattern or other material may be reproduced -- mechanically, electronically, or by any other means, including photocopying - without written permission of Lion Brand Yarn Company.



KEY	
●	= slip stitch (sl st)
○	= chain (ch)
X	= single crochet (sc)
XX	= single crochet 2 together (sc2tog)
XXX	= single crochet 3 together (sc3tog)