



Free Crochet Pattern
Lion Brand® Color Made Easy
Tinton Afghan
Pattern Number: L80216
Designed by Teresa Chorzepa



SKILL LEVEL – Easy

SIZE

About 43 x 56 in. (109 x 142 cm)

MATERIALS

- Lion Brand® Color Made Easy (Art. #195)
 - 098 Alabaster 5 balls
- Lion Brand® large-eyed blunt needle



ADDITIONAL MATERIALS

Crochet hook size L-11 (8 mm)

GAUGE

10 dc + 5 rows = about 4 in. (10 cm).

BE SURE TO CHECK YOUR GAUGE.

NOTES

1. Afghan is worked in one piece, back and forth in rows.
2. For those who find visuals helpful, we've included a stitch diagram.

AFGHAN

Ch 114.

Row 1: Dc in 7th ch from hook (6 skipped ch count as 2 base ch, dc, ch 1), dc in next 9 ch, *ch 2, sk next 2 ch, dc in next 10 ch; rep from * to last 2 ch, ch 1, sk next ch, dc in last ch – you will have nine 10-dc groups, 8 ch-2 sps, 2 ch-1 sps, and 1 dc at the beg and end of this row.

Row 2: Ch 3 (counts as dc), turn, dc in first ch-1 sp, ch 2, sk next 2 dc, dc in next 6 dc, ch 2, sk next 2 dc, *2 dc in next ch-2 sp, ch 2, sk next 2 dc, dc in next 6 dc, ch 2, sk next 2 dc; rep from * to beg ch-sp, 2 dc in beg ch-sp – Nine 6-dc groups, ten 2-dc groups, and 18 ch-2 sps.

Row 3: Ch 3 (counts as dc), turn, sk first dc, dc in next dc, 2 dc in next ch-2 sp, *ch 2, sk next 2 dc, dc in next 2 dc, ch 2, sk next 2 dc, 2 dc in next ch-2 sp, dc in next 2 dc, 2 dc in next ch-2 sp; rep from * to last 6-dc group, ch 2, sk next 2 dc, dc in next 2 dc, ch 2, sk next 2 dc, 2 dc in next ch-2 sp, dc in next dc, dc in top of beg ch-3 – Eight 6-dc groups, nine 2-dc groups, 18 ch-2 sps, and one 4-dc group at beg and end of row.

Row 4: Ch 3 (counts as dc), turn, sk first dc, dc in next 3 dc, 2 dc in next ch-2 sp, *ch 2, sk next 2 dc, 2 dc in next ch-2 sp, dc in next 6 dc, 2 dc in next ch-2 sp; rep from * to last 2-dc group, ch 2, sk next 2 dc, 2 dc in next ch-2 sp, dc in next 3 dc, dc in top of beg ch-3 – Eight 10-dc groups, 9 ch-2 sps, and one 6-dc group at beg and end of row.

Row 5: Ch 3 (counts as dc), turn, sk first dc, dc in next 3 dc, ch 2, sk next 2 dc, 2 dc in next ch-2 sp, *ch 2, sk next 2 dc, dc in next 6 dc, ch 2, sk next 2 dc, 2 dc in next ch-2 sp; rep from * to last 6-dc group, ch 2, sk next 2 dc, dc in next 3 dc, dc

For thousands of free patterns, visit our website www.LionBrand.com

To order visit our website www.lionbrand.com or call: (800) 258-YARN (9276) any time!

Copyright ©1998-2018 Lion Brand Yarn Company, all rights reserved.

No pattern or other material may be reproduced -- mechanically, electronically, or by any other means, including photocopying - without written permission of Lion Brand Yarn Company.

in top of beg ch-3 – Eight 6-dc groups, nine 2-dc groups, 18 ch-2 sps, and one 4-dc group at beg and end of row.

Row 6: Ch 3 (counts as dc), turn, sk first dc, dc in next dc, ch 2, sk next 2 dc, 2 dc in next ch-2 sp, dc in next 2 dc, 2 dc in next ch-2 sp, *ch 2, sk next 2 dc, dc in next 2 dc, ch 2, sk next 2 dc, 2 dc in next ch-2 sp, dc in next 2 dc, 2 dc in next ch-2 sp; rep from * to last 4-dc group, ch 2, sk next 2 dc, dc in next dc, dc in top of beg ch-3 – Nine 6-dc groups, ten 2-dc groups, and 18 ch-2 sps.

Row 7: Ch 4 (counts as dc, ch 1), turn, sk first 2 dc, 2 dc in next ch-2 sp, dc in next 6 dc, 2 dc in next ch-2 sp, *ch 2, sk next 2 dc, 2 dc in next ch-2 sp, dc in next 6 dc, 2 dc in next ch-2 sp; rep from * to last 2-dc group, ch 1, sk next dc, dc in top of beg ch-3 – Nine 10-dc groups, 8 ch-2 sps, 2 ch-1 sps, and 1 dc at the beg and end of this row.

Rows 8-67: Rep Rows 2-7 for 10 more times.

Rows 68-70: Rep Rows 2-4.

Fasten off.

FINISHING

Weave in ends.

ABBREVIATIONS

beg = begin(ning)

ch = chain

ch-sp(s) = chain space(s) previously made

dc = double crochet

rep = repeat

sk = skip

st(s) = stitch(es)

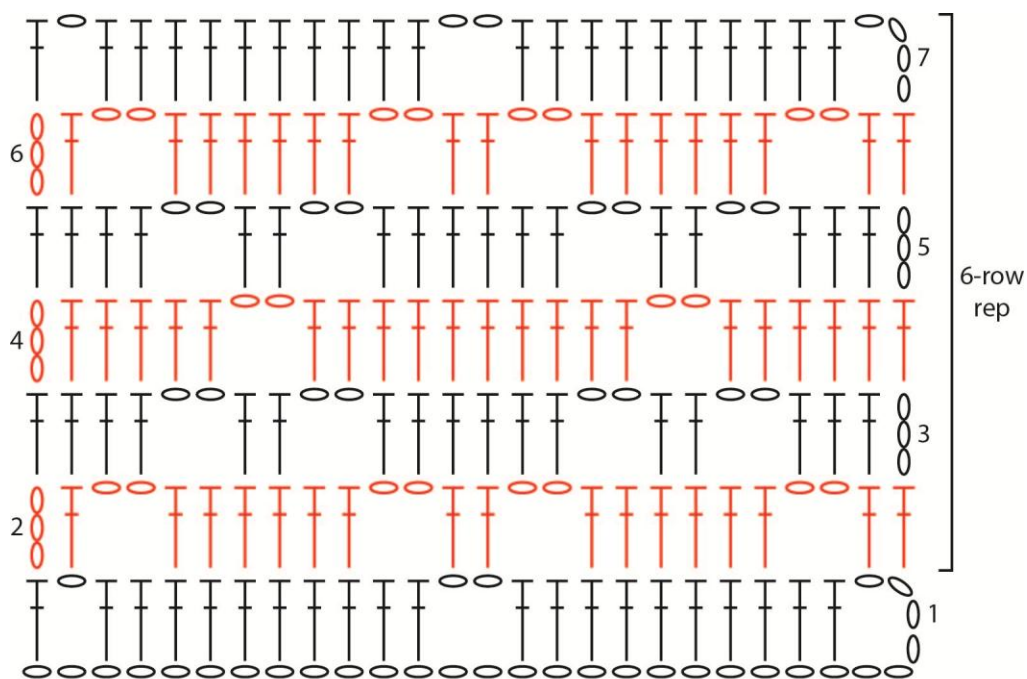
Every effort has been made to produce accurate and complete instructions. We cannot be responsible for variance of individual crafters, human error, or typographical mistakes.

For thousands of free patterns, visit our website www.LionBrand.com

To order visit our website www.lionbrand.com or call: (800) 258-YARN (9276) any time!

Copyright ©1998-2018 Lion Brand Yarn Company, all rights reserved.

No pattern or other material may be reproduced -- mechanically, electronically, or by any other means, including photocopying - without written permission of Lion Brand Yarn Company.



KEY

○ = chain (ch)

┆ = double crochet (dc)